

## GCLM Antibody

Catalog No: #32765

Orders: [order@signalwayantibody.com](mailto:order@signalwayantibody.com)Support: [tech@signalwayantibody.com](mailto:tech@signalwayantibody.com)

## Description

Product Name	GCLM Antibody
Host Species	Rabbit
Clonality	Polyclonal
Purification	Antibodies were purified by affinity purification using immunogen.
Applications	WB IHC IF
Species Reactivity	Hu Ms Rt
Specificity	The antibody detects endogenous level of total GCLM protein.
Immunogen Type	Recombinant Protein
Immunogen Description	Recombinant protein of human GCLM.
Target Name	GCLM
Other Names	GCLM; GLCLR; Glutamate--cysteineligaseregulatorysubunit; GCSlightchain; Gamma-ECSregulatorysubunit
Accession No.	Swiss-Prot:P48507NCBI Gene ID:2730
SDS-PAGE MW	30KD
Concentration	1.0mg/ml
Formulation	Supplied at 1.0mg/mL in phosphate buffered saline (without Mg <sup>2+</sup> and Ca <sup>2+</sup> ), pH 7.4, 150mM NaCl, 0.02% sodium azide and 50% glycerol.
Storage	Store at -20°C

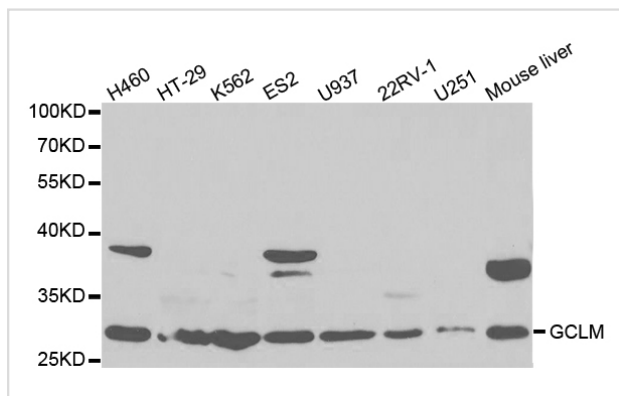
## Application Details

Western blotting: 1:500 - 1:2000

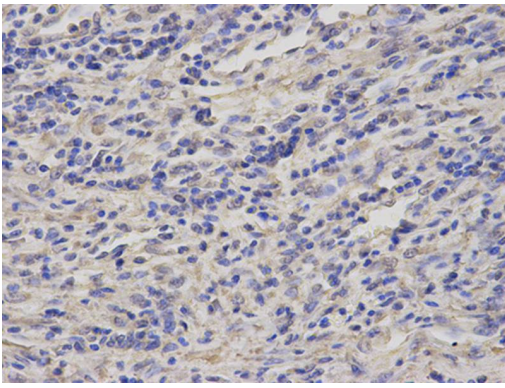
Immunohistochemistry: 1:50 - 1:200

Immunofluorescence: 1:50 - 1:200

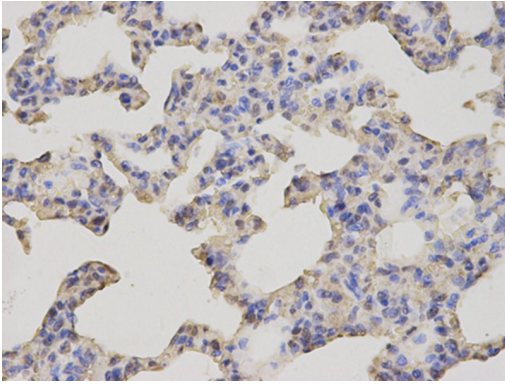
## Images



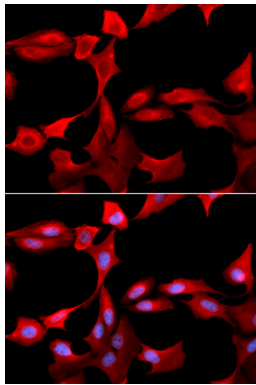
Western blot analysis of extracts of various cell lines, using GCLM antibody.



Immunohistochemical analysis of paraffin-embedded human stomach cancer using GCLM antibody at dilution of 1:200 (400x lens).



Immunohistochemical analysis of paraffin-embedded rat lung using GCLM antibody at dilution of 1:200 (400x lens).



Immunofluorescence analysis of U20S cell using GCLM antibody. Blue: DAPI for nuclear staining.

## Background

Glutamate-cysteine ligase, also known as gamma-glutamylcysteine synthetase, is the first rate limiting enzyme of glutathione synthesis. The enzyme consists of two subunits, a heavy catalytic subunit and a light regulatory subunit. Gamma glutamylcysteine synthetase deficiency has been implicated in some forms of hemolytic anemia.

Note: This product is for in vitro research use only and is not intended for use in humans or animals.