

## SNCG Antibody

Catalog No: #32690

Orders: [order@signalwayantibody.com](mailto:order@signalwayantibody.com)Support: [tech@signalwayantibody.com](mailto:tech@signalwayantibody.com)

## Description

Product Name	SNCG Antibody
Host Species	Rabbit
Clonality	Polyclonal
Purification	Antibodies were purified by affinity purification using immunogen.
Applications	WB IHC IF
Species Reactivity	Hu Ms Rt
Specificity	The antibody detects endogenous level of total SNCG protein.
Immunogen Type	Recombinant Protein
Immunogen Description	Recombinant protein of human SNCG.
Target Name	SNCG
Other Names	SR; BCSG1;
Accession No.	Swiss-Prot:O76070NCBI Gene ID:6623
SDS-PAGE MW	13KD
Concentration	1.0mg/ml
Formulation	Supplied at 1.0mg/mL in phosphate buffered saline (without Mg <sup>2+</sup> and Ca <sup>2+</sup> ), pH 7.4, 150mM NaCl, 0.02% sodium azide and 50% glycerol.
Storage	Store at -20°C

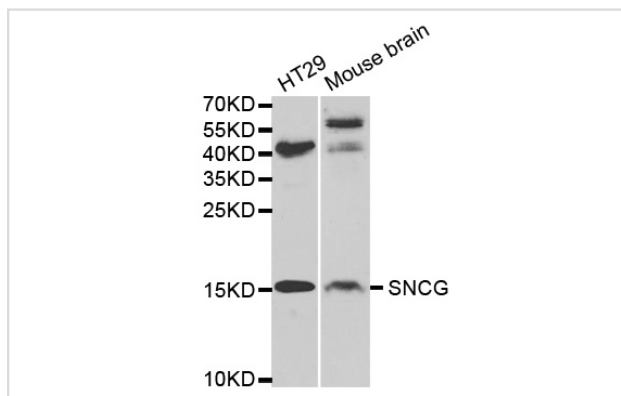
## Application Details

Western blotting: 1:500 - 1:2000

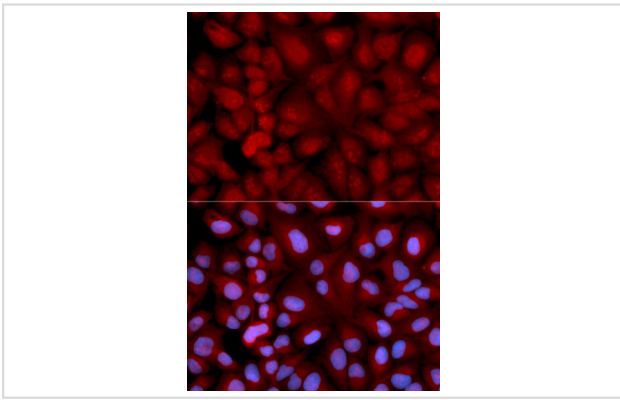
Immunohistochemistry: 1:50 - 1:200

Immunofluorescence: 1:50 - 1:200

## Images



Western blot analysis of extracts of various cell lines, using SNCG antibody.



Immunofluorescence analysis of U2OS cell using SNCG antibody. Blue: DAPI for nuclear staining.

## Background

This gene encodes a member of the synuclein family of proteins which are believed to be involved in the pathogenesis of neurodegenerative diseases. Mutations in this gene have also been associated with breast tumor development.

Note: This product is for in vitro research use only and is not intended for use in humans or animals.