

SELE Antibody

Catalog No: #32655

Orders: order@signalwayantibody.comSupport: tech@signalwayantibody.com

Description

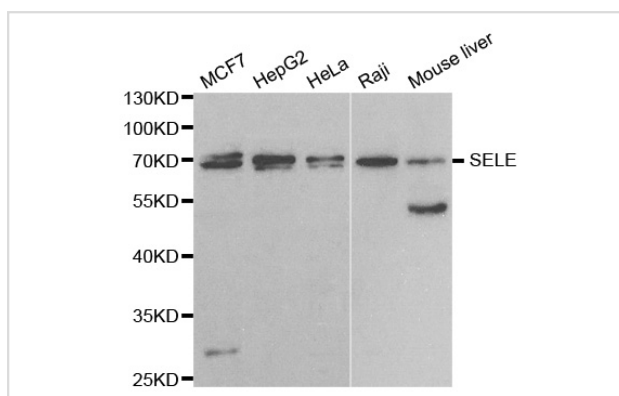
Product Name	SELE Antibody
Host Species	Rabbit
Clonality	Polyclonal
Purification	Antibodies were purified by affinity purification using immunogen.
Applications	WB IHC
Species Reactivity	Hu Ms Rt
Specificity	The antibody detects endogenous level of total SELE protein.
Immunogen Type	Recombinant Protein
Immunogen Description	Recombinant protein of human SELE.
Target Name	SELE
Other Names	SELE; CD62EL; ELAM; ELAM1; ESEL
Accession No.	Swiss-Prot:P16581NCBI Gene ID:6401
SDS-PAGE MW	67KD
Concentration	1.0mg/ml
Formulation	Supplied at 1.0mg/mL in phosphate buffered saline (without Mg ²⁺ and Ca ²⁺), pH 7.4, 150mM NaCl, 0.02% sodium azide and 50% glycerol.
Storage	Store at -20°C

Application Details

Western blotting: 1:500 - 1:2000

Immunohistochemistry: 1:50 - 1:100

Images



Western blot analysis of extracts of various cell lines, using SELE antibody.

Background

The protein encoded by this gene is found in cytokine-stimulated endothelial cells and is thought to be responsible for the accumulation of blood leukocytes at sites of inflammation by mediating the adhesion of cells to the vascular lining. It exhibits structural features such as the presence of

lectin- and EGF-like domains followed by short consensus repeat (SCR) domains that contain 6 conserved cysteine residues. These proteins are part of the selectin family of cell adhesion molecules. Adhesion molecules participate in the interaction between leukocytes and the endothelium and appear to be involved in the pathogenesis of atherosclerosis.

Note: This product is for in vitro research use only and is not intended for use in humans or animals.