

ARG1 Antibody

Catalog No: #32468

Orders: order@signalwayantibody.comSupport: tech@signalwayantibody.com

Description

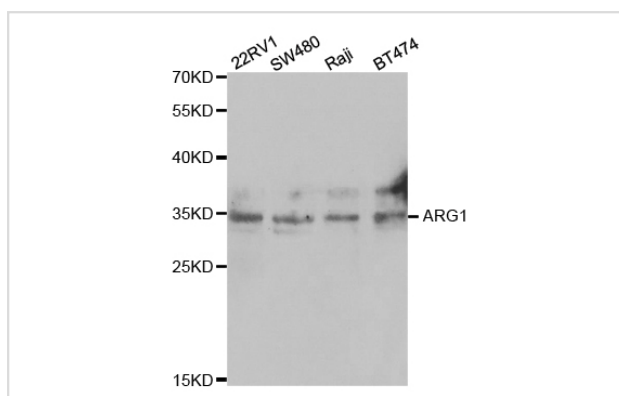
Product Name	ARG1 Antibody
Host Species	Rabbit
Clonality	Polyclonal
Purification	Antibodies were purified by affinity purification using immunogen.
Applications	WB IHC
Species Reactivity	Hu Ms Rt
Specificity	The antibody detects endogenous level of total ARG1 protein.
Immunogen Type	Recombinant Protein
Immunogen Description	Recombinant protein of human ARG1.
Target Name	ARG1
Other Names	ARG1; Arginase-1; Liver-typearginase; Typelarginase;
Accession No.	Swiss-Prot:P05089NCBI Gene ID:383
SDS-PAGE MW	35KD
Concentration	1.0mg/ml
Formulation	Supplied at 1.0mg/mL in phosphate buffered saline (without Mg ²⁺ and Ca ²⁺), pH 7.4, 150mM NaCl, 0.02% sodium azide and 50% glycerol.
Storage	Store at -20°C

Application Details

Western blotting: 1:500 - 1:2000

Immunohistochemistry: 1:50 - 1:100

Images



Western blot analysis of extracts of various cell lines, using RAD51 antibody.

Background

Arginase catalyzes the hydrolysis of arginine to ornithine and urea. At least two isoforms of mammalian arginase exist (types I and II) which differ in their tissue distribution, subcellular localization, immunologic crossreactivity and physiologic function. The type I isoform encoded by this gene, is a

cytosolic enzyme and expressed predominantly in the liver as a component of the urea cycle. Inherited deficiency of this enzyme results in argininemia, an autosomal recessive disorder characterized by hyperammonemia. Two transcript variants encoding different isoforms have been found for this gene.

Note: This product is for in vitro research use only and is not intended for use in humans or animals.