

POLB Antibody

Catalog No: #32383

Orders: order@signalwayantibody.comSupport: tech@signalwayantibody.com

Description

Product Name	POLB Antibody
Host Species	Rabbit
Clonality	Polyclonal
Purification	Antibodies were purified by affinity purification using immunogen.
Applications	WB IHC IF
Species Reactivity	Hu Ms Rt
Specificity	The antibody detects endogenous level of total POLB protein.
Immunogen Type	Recombinant Protein
Immunogen Description	Recombinant protein of human POLB.
Target Name	POLB
Other Names	MGC125976; POLB;
Accession No.	Swiss-Prot:P06746NCBI Gene ID:5423
SDS-PAGE MW	38KD
Concentration	1.0mg/ml
Formulation	Supplied at 1.0mg/mL in phosphate buffered saline (without Mg ²⁺ and Ca ²⁺), pH 7.4, 150mM NaCl, 0.02% sodium azide and 50% glycerol.
Storage	Store at -20°C

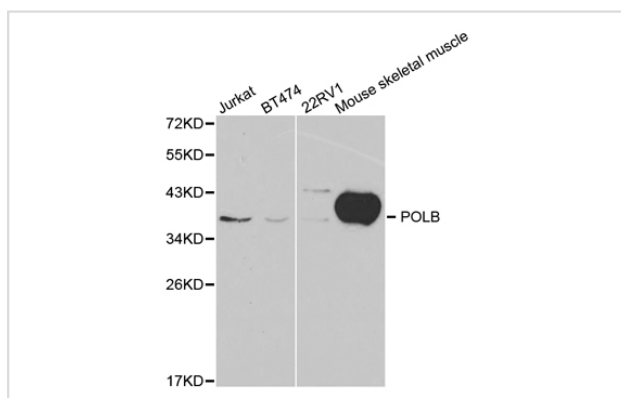
Application Details

Western blotting: 1:200 - 1:1000

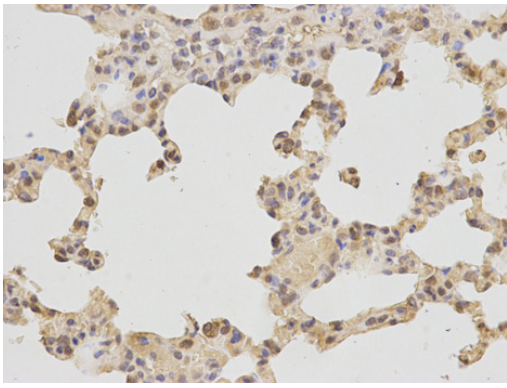
Immunohistochemistry: 1:50 - 1:100

Immunofluorescence: 1:50 - 1:200

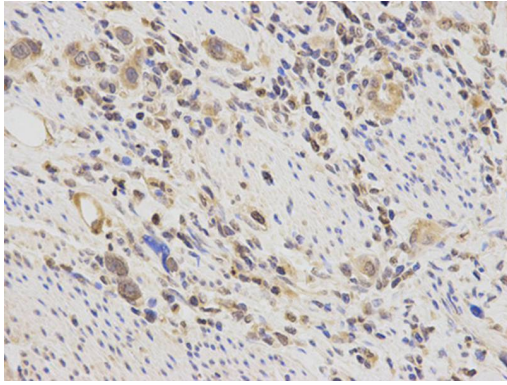
Images



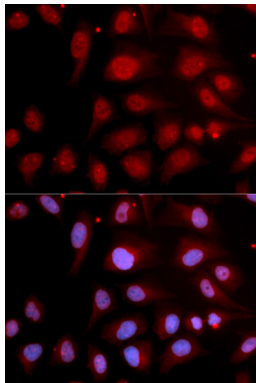
Western blot analysis of extracts of various cell lines, using POLB antibody.



Immunohistochemical analysis of paraffin-embedded human stomach cancer using POLB antibody at dilution of 1:200 (400x lens).



Immunohistochemical analysis of paraffin-embedded rat lung using POLB antibody at dilution of 1:200 (400x lens).



Immunofluorescence analysis of U2OS cell using POLB antibody. Blue: DAPI for nuclear staining.

Background

The protein encoded by this gene is a DNA polymerase involved in base excision and repair, also called gap-filling DNA synthesis. The encoded protein, acting as a monomer, is normally found in the cytoplasm, but it translocates to the nucleus upon DNA damage. Several transcript variants of this gene exist, but the full-length nature of only one has been described to date.

Note: This product is for in vitro research use only and is not intended for use in humans or animals.