

## CDC25C Antibody

Catalog No: #32378

Orders: [order@signalwayantibody.com](mailto:order@signalwayantibody.com)Support: [tech@signalwayantibody.com](mailto:tech@signalwayantibody.com)

## Description

Product Name	CDC25C Antibody
Host Species	Rabbit
Clonality	Polyclonal
Purification	Antibodies were purified by affinity purification using immunogen.
Applications	WB IHC IF IP
Species Reactivity	Hu Ms Rt
Specificity	The antibody detects endogenous level of total CDC25C protein.
Immunogen Type	Recombinant Protein
Immunogen Description	Recombinant protein of human CDC25C.
Target Name	CDC25C
Other Names	CDC25; PPP1R60;
Accession No.	Swiss-Prot:P30307NCBI Gene ID:995
SDS-PAGE MW	53KD
Concentration	1.0mg/ml
Formulation	Supplied at 1.0mg/mL in phosphate buffered saline (without Mg <sup>2+</sup> and Ca <sup>2+</sup> ), pH 7.4, 150mM NaCl, 0.02% sodium azide and 50% glycerol.
Storage	Store at -20°C

## Application Details

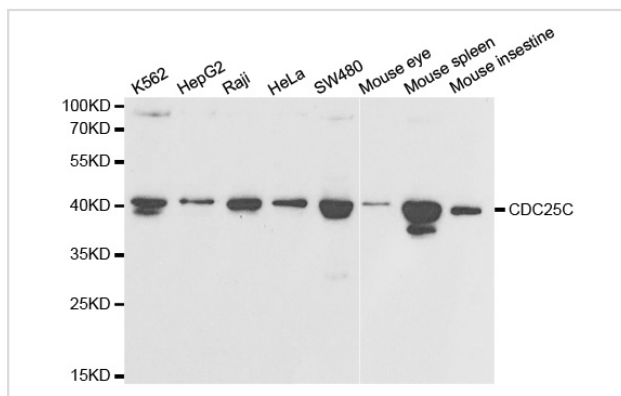
Western blotting: 1:500 - 1:2000

Immunohistochemistry: 1:50 - 1:100

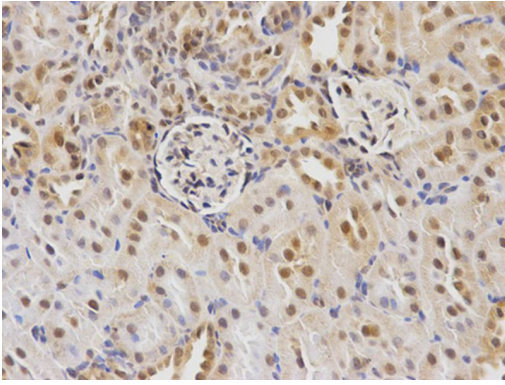
Immunofluorescence: 1:50 - 1:200

Immunoprecipitation: 1:50 - 1:100

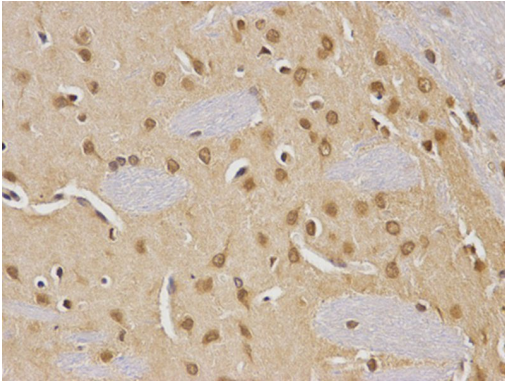
## Images



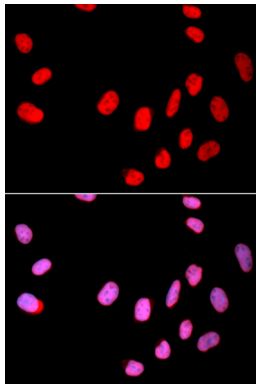
Western blot analysis of extracts of K562 cell lines, using CDC25C antibody.



Immunohistochemical analysis of paraffin-embedded rat brain using CDC25C antibody at dilution of 1:100 (400x lens).



Immunohistochemical analysis of paraffin-embedded rat kidney using CDC25C antibody at dilution of 1:100 (400x lens).



Immunofluorescence analysis of U2OS cell using CDC25C antibody. Blue: DAPI for nuclear staining.

## Background

Cdc25 is a protein phosphatase responsible for dephosphorylating and activating cdc2, a crucial step in regulating the entry of all eukaryotic cells into mitosis (1). cdc25C is constitutively phosphorylated at Ser216 throughout interphase by c-TAK1, while phosphorylation at this site is DNA damage-dependent at the G2/M checkpoint (2). When phosphorylated at Ser216, cdc25C binds to members of the 14-3-3 family of proteins, sequestering cdc25C in the cytoplasm and thereby preventing premature mitosis (3). The checkpoint kinases Chk1 and Chk2 phosphorylate cdc25C at Ser216 in response to DNA damage (4,5).

Note: This product is for in vitro research use only and is not intended for use in humans or animals.