

CAMP Antibody

Catalog No: #32360

Orders: order@signalwayantibody.comSupport: tech@signalwayantibody.com

Description

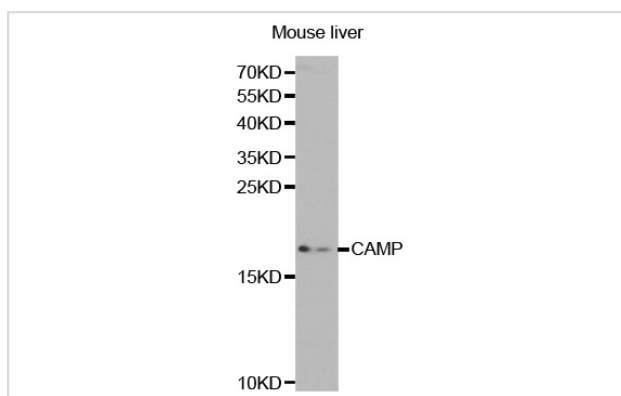
Product Name	CAMP Antibody
Host Species	Rabbit
Clonality	Polyclonal
Purification	Antibodies were purified by affinity purification using immunogen.
Applications	WB IHC
Species Reactivity	Hu
Specificity	The antibody detects endogenous level of total CAMP protein.
Immunogen Type	Recombinant Protein
Immunogen Description	Recombinant protein of human CAMP.
Target Name	CAMP
Other Names	LL37; CAP18; CRAMP; HSD26; CAP-18
Accession No.	Swiss-Prot:P49913NCBI Gene ID:820
SDS-PAGE MW	19KD
Concentration	1.0mg/ml
Formulation	Supplied at 1.0mg/mL in phosphate buffered saline (without Mg ²⁺ and Ca ²⁺), pH 7.4, 150mM NaCl, 0.02% sodium azide and 50% glycerol.
Storage	Store at -20°C

Application Details

Western blotting: 1:500 - 1:2000

Immunohistochemistry: 1:50 - 1:100

Images



Western blot analysis of extracts of mouse liver cell lines, using CAMP antibody.

Background

This gene encodes a member of an antimicrobial peptide family, characterized by a highly conserved N-terminal signal peptide containing a cathelin domain and a structurally variable cationic antimicrobial peptide, which is produced by extracellular proteolysis from the C-terminus. The encoded

protein has several functions in addition to antimicrobial activity, including cell chemotaxis, immune mediator induction and inflammatory response regulation.

Note: This product is for in vitro research use only and is not intended for use in humans or animals.