

IDE Antibody

Catalog No: #32354

Orders: order@signalwayantibody.comSupport: tech@signalwayantibody.com

Description

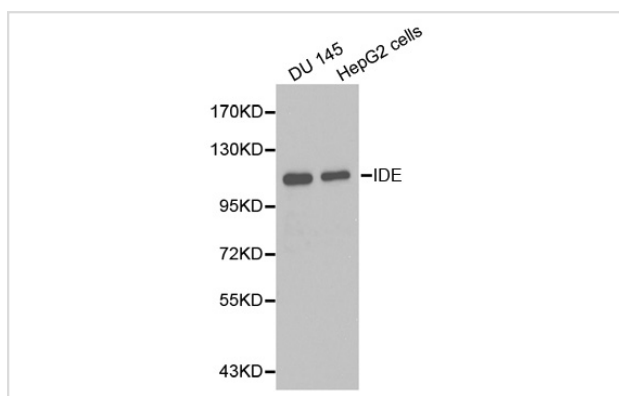
Product Name	IDE Antibody
Host Species	Rabbit
Clonality	Polyclonal
Purification	Antibodies were purified by affinity purification using immunogen.
Applications	WB IHC
Species Reactivity	Hu Ms Rt
Specificity	The antibody detects endogenous level of total IDE protein.
Immunogen Type	Recombinant Protein
Immunogen Description	Recombinant protein of human IDE.
Target Name	IDE
Other Names	FLJ35968; INSULYSIN;
Accession No.	Swiss-Prot:P14735NCBI Gene ID:3416
SDS-PAGE MW	118KD
Concentration	1.0mg/ml
Formulation	Supplied at 1.0mg/mL in phosphate buffered saline (without Mg ²⁺ and Ca ²⁺), pH 7.4, 150mM NaCl, 0.02% sodium azide and 50% glycerol.
Storage	Store at -20°C

Application Details

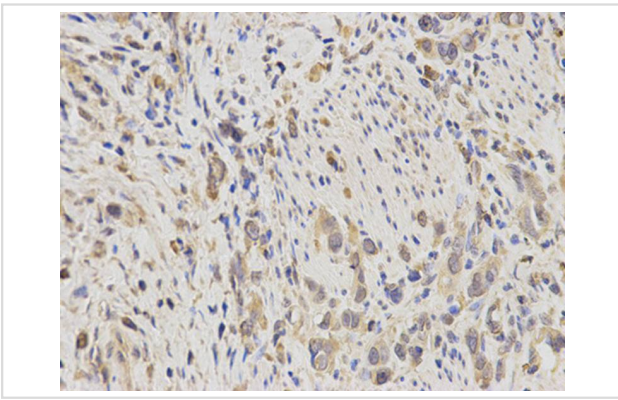
Western blotting: 1:500 - 1:2000

Immunohistochemistry: 1:50 - 1:100

Images



Western blot analysis of extracts of various cell lines, using IDE antibody.



Immunohistochemical analysis of paraffin-embedded human stomach cancer using IDE antibody at dilution of 1:200 (400x lens).

Background

This gene encodes a zinc metallopeptidase that degrades intracellular insulin, and thereby terminates insulin's activity, as well as participating in intercellular peptide signalling by degrading diverse peptides such as glucagon, amylin, bradykinin, and kallidin. The preferential affinity of this enzyme for insulin results in insulin-mediated inhibition of the degradation of other peptides such as beta-amyloid. Deficiencies in this protein's function are associated with Alzheimer's disease and type 2 diabetes mellitus but mutations in this gene have not been shown to be causative for these diseases. This protein localizes primarily to the cytoplasm but in some cell types localizes to the extracellular space, cell membrane, peroxisome, and mitochondrion. Alternative splicing results in multiple transcript variants encoding distinct isoforms. Additional transcript variants have been described but have not been experimentally verified.

Note: This product is for in vitro research use only and is not intended for use in humans or animals.