

## SELL Antibody

Catalog No: #32348

Orders: [order@signalwayantibody.com](mailto:order@signalwayantibody.com)Support: [tech@signalwayantibody.com](mailto:tech@signalwayantibody.com)

## Description

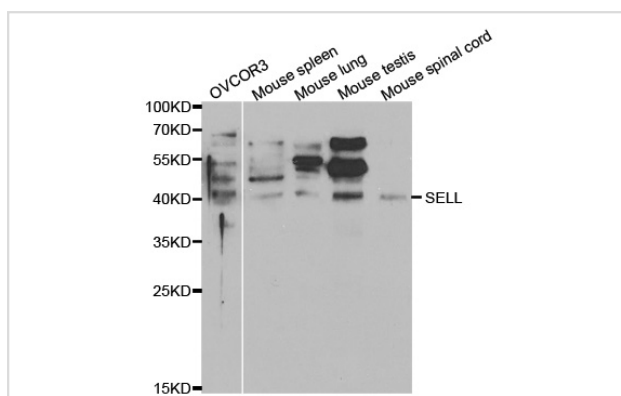
Product Name	SELL Antibody
Host Species	Rabbit
Clonality	Polyclonal
Purification	Antibodies were purified by affinity purification using immunogen.
Applications	WB IHC
Species Reactivity	Hu Ms Rt
Specificity	The antibody detects endogenous level of total SELL protein.
Immunogen Type	Recombinant Protein
Immunogen Description	Recombinant protein of human SELL.
Target Name	SELL
Other Names	TQ1; LAM1; LEU8; LNHR; LSEL
Accession No.	Swiss-Prot:P14151NCBI Gene ID:6402
SDS-PAGE MW	42KD
Concentration	1.0mg/ml
Formulation	Supplied at 1.0mg/mL in phosphate buffered saline (without Mg <sup>2+</sup> and Ca <sup>2+</sup> ), pH 7.4, 150mM NaCl, 0.02% sodium azide and 50% glycerol.
Storage	Store at -20°C

## Application Details

Western blotting: 1:500 - 1:2000

Immunohistochemistry: 1:50 - 1:100

## Images



Western blot analysis of extracts of various cell lines, using SELL antibody.

## Background

This gene encodes a cell surface adhesion molecule that belongs to a family of adhesion/homing receptors. The encoded protein contains a C-type lectin-like domain, a calcium-binding epidermal growth factor-like domain, and two short complement-like repeats. The gene product is required for

binding and subsequent rolling of leucocytes on endothelial cells, facilitating their migration into secondary lymphoid organs and inflammation sites. Single-nucleotide polymorphisms in this gene have been associated with various diseases including immunoglobulin A nephropathy. Alternatively spliced transcript variants have been found for this gene.

---

Note: This product is for in vitro research use only and is not intended for use in humans or animals.