

NPPA Antibody

Catalog No: #32338

Orders: order@signalwayantibody.comSupport: tech@signalwayantibody.com

Description

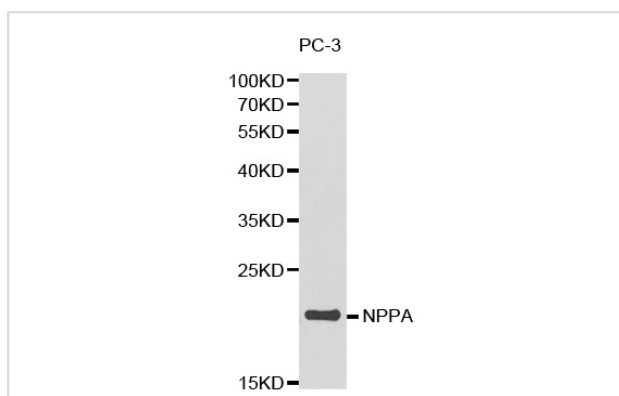
| | |
|-----------------------|--|
| Product Name | NPPA Antibody |
| Host Species | Rabbit |
| Clonality | Polyclonal |
| Purification | Antibodies were purified by affinity purification using immunogen. |
| Applications | WB IHC |
| Species Reactivity | Hu Ms Rt |
| Specificity | The antibody detects endogenous level of total NPPA protein. |
| Immunogen Type | Recombinant Protein |
| Immunogen Description | Recombinant protein of human NPPA. |
| Target Name | NPPA |
| Other Names | ANF; ANP; PND; ATRFB6; CDD-ANF |
| Accession No. | Swiss-Prot:P01160NCBI Gene ID:4878 |
| SDS-PAGE MW | 17KD |
| Concentration | 1.0mg/ml |
| Formulation | Supplied at 1.0mg/mL in phosphate buffered saline (without Mg ²⁺ and Ca ²⁺), pH 7.4, 150mM NaCl, 0.02% sodium azide and 50% glycerol. |
| Storage | Store at -20°C |

Application Details

Western blotting: 1:500 - 1:2000

Immunohistochemistry: 1:50 - 1:100

Images



Western blot analysis of extracts of PC-3 cell lines, using NPPA antibody.

Background

The protein encoded by this gene belongs to the natriuretic peptide family. Natriuretic peptides are implicated in the control of extracellular fluid volume and electrolyte homeostasis. This protein is synthesized as a large precursor (containing a signal peptide), which is processed to release a peptide

from the N-terminus with similarity to vasoactive peptide, cardiodilatin, and another peptide from the C-terminus with natriuretic-diuretic activity. Mutations in this gene have been associated with atrial fibrillation familial type 6.

Note: This product is for in vitro research use only and is not intended for use in humans or animals.