

## BCHE Antibody

Catalog No: #32284

Orders: [order@signalwayantibody.com](mailto:order@signalwayantibody.com)Support: [tech@signalwayantibody.com](mailto:tech@signalwayantibody.com)

## Description

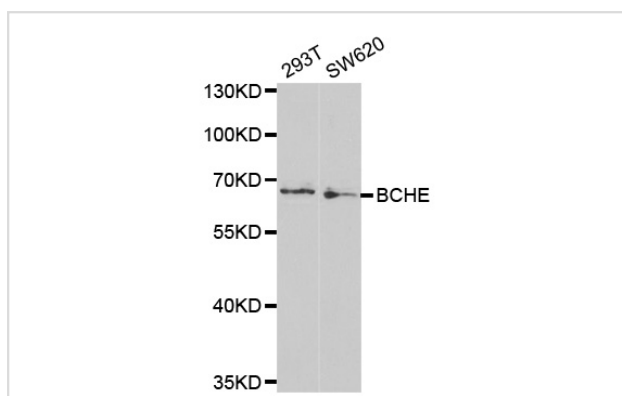
Product Name	BCHE Antibody
Host Species	Rabbit
Clonality	Polyclonal
Purification	Antibodies were purified by affinity purification using immunogen.
Applications	WB IF
Species Reactivity	Hu Ms Rt
Specificity	The antibody detects endogenous level of total BCHE protein.
Immunogen Type	Recombinant Protein
Immunogen Description	Recombinant protein of human BCHE.
Target Name	BCHE
Other Names	E1; CHE1; CHE2;
Accession No.	Swiss-Prot:P06276NCBI Gene ID:590
SDS-PAGE MW	68KD
Concentration	1.0mg/ml
Formulation	Supplied at 1.0mg/mL in phosphate buffered saline (without Mg <sup>2+</sup> and Ca <sup>2+</sup> ), pH 7.4, 150mM NaCl, 0.02% sodium azide and 50% glycerol.
Storage	Store at -20°C

## Application Details

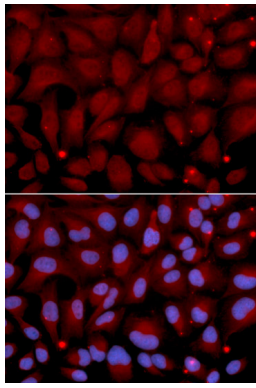
Western blotting: 1:500 - 1:2000:

Immunofluorescence: 1:50 - 1:200

## Images



Western blot analysis of extracts of various cell lines, using BCHE antibody.



Immunofluorescence analysis of U2OS cell using BCHE antibody. Blue: DAPI for nuclear staining.

## Background

Mutant alleles at the BCHE locus are responsible for suxamethonium sensitivity. Homozygous persons sustain prolonged apnea after administration of the muscle relaxant suxamethonium in connection with surgical anesthesia. The activity of pseudocholinesterase in the serum is low and its substrate behavior is atypical. In the absence of the relaxant, the homozygote is at no known disadvantage.

Note: This product is for in vitro research use only and is not intended for use in humans or animals.