

LIPC Antibody

Catalog No: #32277

Orders: order@signalwayantibody.comSupport: tech@signalwayantibody.com

Description

Product Name	LIPC Antibody
Host Species	Rabbit
Clonality	Polyclonal
Purification	Antibodies were purified by affinity purification using immunogen.
Applications	WB IHC IF
Species Reactivity	Hu
Specificity	The antibody detects endogenous level of total LIPC protein.
Immunogen Type	Recombinant Protein
Immunogen Description	Recombinant protein of human LIPC.
Target Name	LIPC
Other Names	HL; HTGL; LIPH; HDLCQ12; LIPC
Accession No.	Swiss-Prot:P11150NCBI Gene ID:3990
SDS-PAGE MW	56KD
Concentration	1.0mg/ml
Formulation	Supplied at 1.0mg/mL in phosphate buffered saline (without Mg ²⁺ and Ca ²⁺), pH 7.4, 150mM NaCl, 0.02% sodium azide and 50% glycerol.
Storage	Store at -20°C

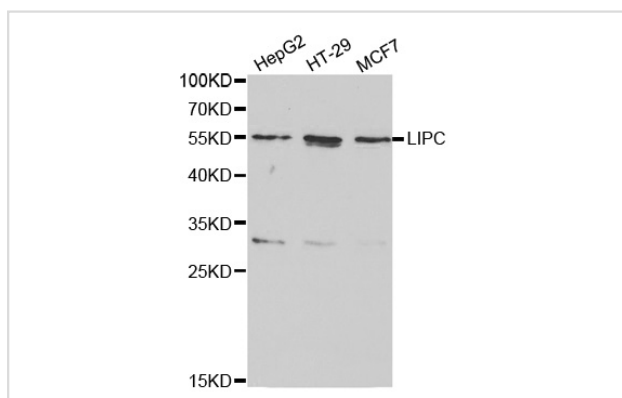
Application Details

Western blotting: 1:500 - 1:2000

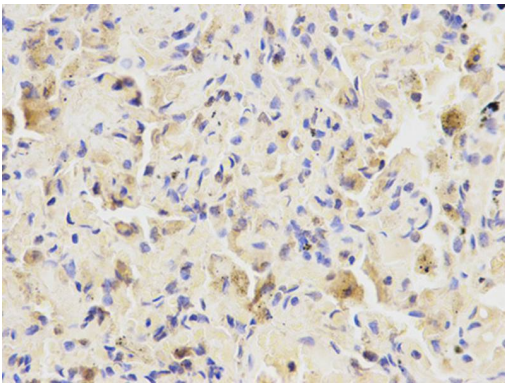
Immunohistochemistry: 1:50 - 1:100

Immunofluorescence: 1:50 - 1:200

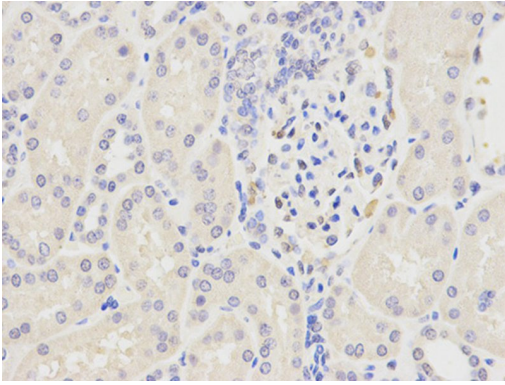
Images



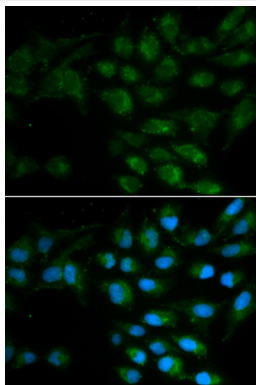
Western blot analysis of extracts of various cell lines, using LIPC antibody.



Immunohistochemical analysis of paraffin-embedded human kidney using LIPC antibody at dilution of 1:200 (400x lens).



Immunohistochemical analysis of paraffin-embedded human lung using LIPC antibody at dilution of 1:200 (400x lens).



Immunofluorescence analysis of MCF7 cell using LIPC antibody. Blue: DAPI for nuclear staining.

Background

LIPC, also named as HTGL and HL, belongs to the AB hydrolase superfamily and Lipase family. It has the capacity to catalyze hydrolysis of phospholipids, mono-, di-, and triglycerides, and acyl-CoA thioesters. LIPC is an important enzyme in HDL metabolism. It binds heparin.

Note: This product is for in vitro research use only and is not intended for use in humans or animals.