

IKBKE Antibody

Catalog No: #32038

Orders: order@signalwayantibody.comSupport: tech@signalwayantibody.com

Description

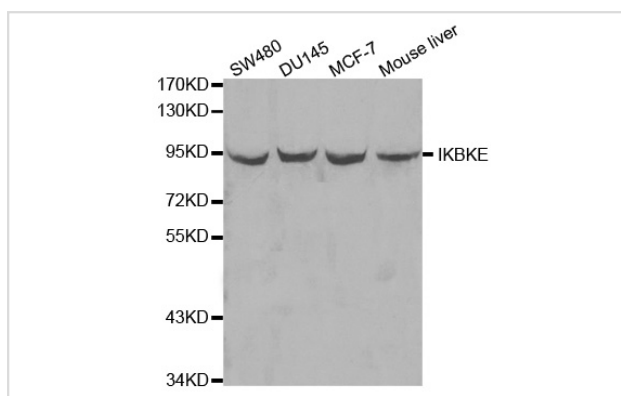
Product Name	IKBKE Antibody
Host Species	Rabbit
Clonality	Polyclonal
Purification	Antibodies were purified by affinity purification using immunogen.
Applications	WB IHC
Species Reactivity	Hu
Specificity	The antibody detects endogenous level of total IKBKE protein.
Immunogen Type	Recombinant Protein
Immunogen Description	Recombinant protein of human IKBKE.
Target Name	IKBKE
Other Names	IKBKE; IKK-E; IKK-i; IKKE; IKKI
Accession No.	Swiss-Prot:Q14164NCBI Gene ID:9641
SDS-PAGE MW	80KD
Concentration	1.0mg/ml
Formulation	Supplied at 1.0mg/mL in phosphate buffered saline (without Mg ²⁺ and Ca ²⁺), pH 7.4, 150mM NaCl, 0.02% sodium azide and 50% glycerol.
Storage	Store at -20°C

Application Details

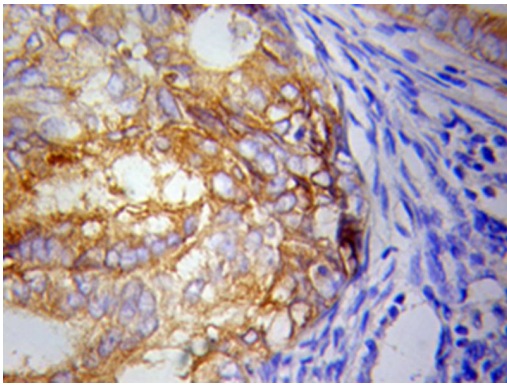
Western blotting: 1:500 - 1:2000

Immunohistochemistry: 1:50 - 1:200

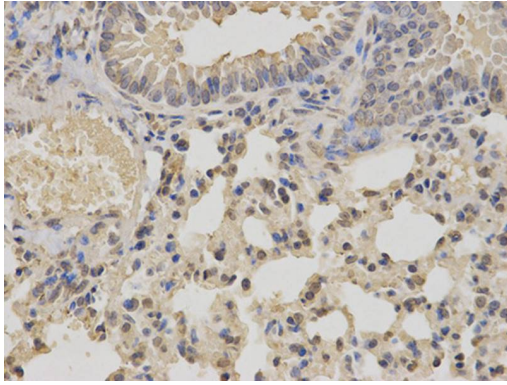
Images



Western blot analysis of extracts of various cell lines, using IKBKE antibody.



Immunohistochemical analysis of human pancreatic tissue using IKBKE antibody



Immunohistochemical analysis of paraffin-embedded mouse lung using IKBKE antibody at dilution of 1:100 (400x lens).

Background

IKK epsilon is a noncanonical I-kappa-B kinase (IKK) that is essential for regulating antiviral signaling pathways. It has also been identified as a breast cancer oncogene and is amplified and overexpressed in over 30% of breast carcinomas and breast cancer cell lines (1). IKK epsilon phosphorylates inhibitors of NF-kappa-B thus leading to the dissociation of the inhibitor/NF-kappa-B complex and ultimately the degradation of the inhibitor. It plays a special role in the immune response. IKK epsilon protects cells against DNA damage-induced cell death (2).

Note: This product is for in vitro research use only and is not intended for use in humans or animals.