

## GFAP Antibody

Catalog No: #32033

Orders: [order@signalwayantibody.com](mailto:order@signalwayantibody.com)Support: [tech@signalwayantibody.com](mailto:tech@signalwayantibody.com)

## Description

Product Name	GFAP Antibody
Host Species	Rabbit
Clonality	Polyclonal
Purification	Antibodies were purified by affinity purification using immunogen.
Applications	WB IHC IF
Species Reactivity	Hu Ms Rt
Specificity	The antibody detects endogenous level of total GFAP protein.
Immunogen Type	Recombinant Protein
Immunogen Description	Recombinant protein of human GFAP .
Target Name	GFAP
Other Names	GFAP; FLJ45472;
Accession No.	Swiss-Prot:P14136NCBI Gene ID:2670
SDS-PAGE MW	50KD
Concentration	1.0mg/ml
Formulation	Supplied at 1.0mg/mL in phosphate buffered saline (without Mg <sup>2+</sup> and Ca <sup>2+</sup> ), pH 7.4, 150mM NaCl, 0.02% sodium azide and 50% glycerol.
Storage	Store at -20°C

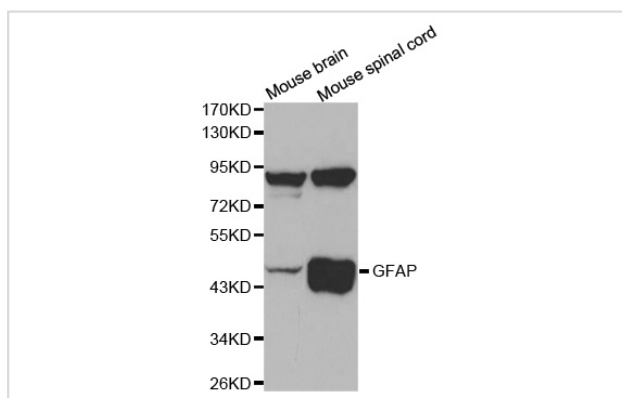
## Application Details

Western blotting: 1:500 - 1:2000

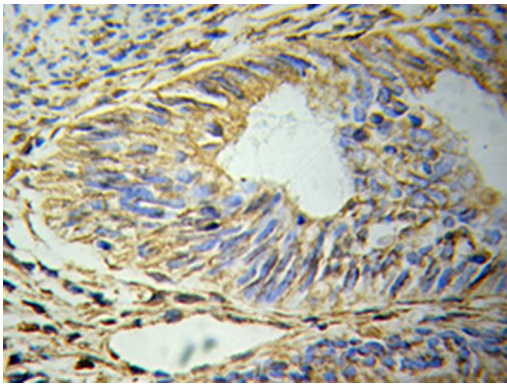
Immunohistochemistry: 1:50 - 1:200

Immunofluorescence: 1:50 - 1:100

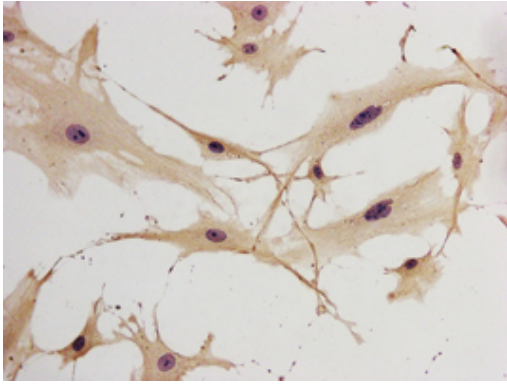
## Images



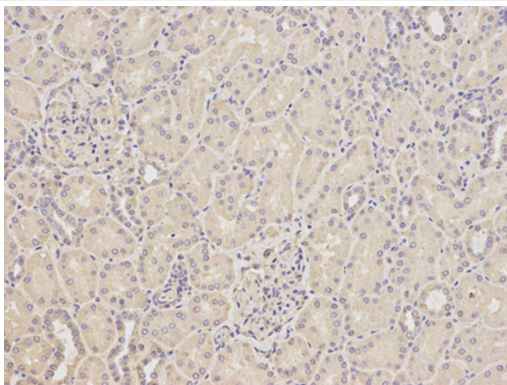
Western blot analysis of extracts of mouse brain and mouse spinal cord, using GFAP antibody.



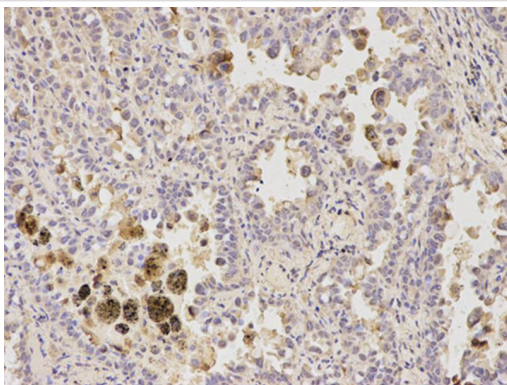
Immunohistochemical analysis of paraffin-embedded H-brain using GFAP antibody.



Immunohistochemical analysis of frozen neuroglial cells using GFAP antibody.



Immunohistochemical analysis of paraffin-embedded human kidney using GFAP antibody at dilution of 1:200 (200x lens).  
/Immunofluorescent analysis of hippocampal region of mouse using GFAP antibody.



Immunohistochemical analysis of paraffin-embedded human lung cancer using GFAP antibody at dilution of 1:200 (200x lens).

## Background

The cytoskeleton consists of three types of cytosolic fibers: microfilaments (actin filaments), intermediate filaments, and microtubules. Major types of intermediate filaments are specifically expressed in particular cell types: cytokeratins in epithelial cells, glial fibrillary acidic protein (GFAP) in glial cells, desmin in skeletal, visceral, and certain vascular smooth muscle cells, vimentin in cells of mesenchymal origin, and neurofilaments in neurons. GFAP and vimentin form intermediate filaments in astroglial cells and modulate their motility and shape (1). In particular, vimentin filaments are present at early developmental stages, while GFAP filaments are characteristic of differentiated and mature brain astrocytes. Thus, GFAP is commonly used as a marker for intracranial and intraspinal tumors arising from astrocytes (2). In addition, GFAP intermediate filaments are also present in non-myelin-forming Schwann cells in the peripheral nervous system (3).

---

Note: This product is for in vitro research use only and is not intended for use in humans or animals.