

CYCS Antibody

Catalog No: #32024

Orders: order@signalwayantibody.comSupport: tech@signalwayantibody.com

Description

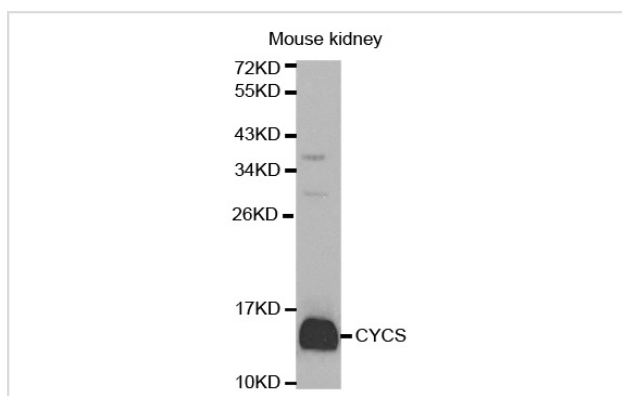
Product Name	CYCS Antibody
Host Species	Rabbit
Clonality	Polyclonal
Purification	Antibodies were purified by affinity purification using immunogen.
Applications	WB IHC
Species Reactivity	Hu Ms Rt
Specificity	The antibody detects endogenous level of total CYCS protein.
Immunogen Type	Recombinant Protein
Immunogen Description	Recombinant protein of human CYCS.
Target Name	CYCS
Other Names	CYCS; CYC; HCS; THC4;
Accession No.	Swiss-Prot:P99999NCBI Gene ID:54205
SDS-PAGE MW	12KD
Concentration	1.0mg/ml
Formulation	Supplied at 1.0mg/mL in phosphate buffered saline (without Mg ²⁺ and Ca ²⁺), pH 7.4, 150mM NaCl, 0.02% sodium azide and 50% glycerol.
Storage	Store at -20°C

Application Details

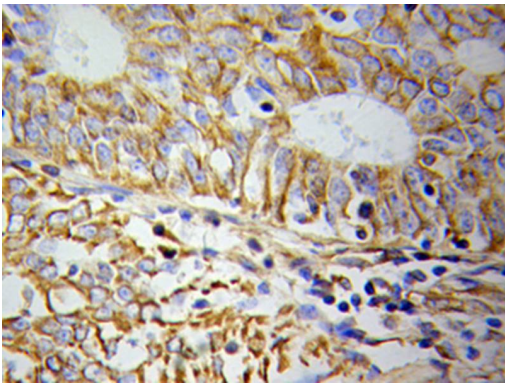
Western blotting: 1:500 - 1:2000

Immunohistochemistry: 1:50 - 1:200

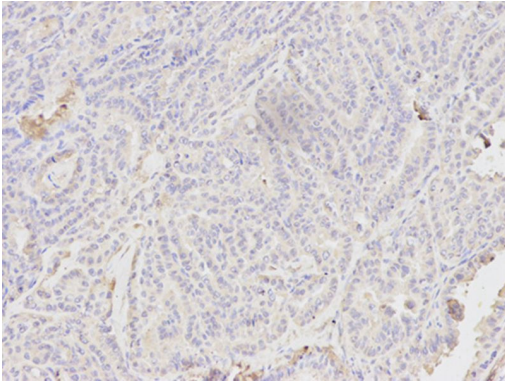
Images



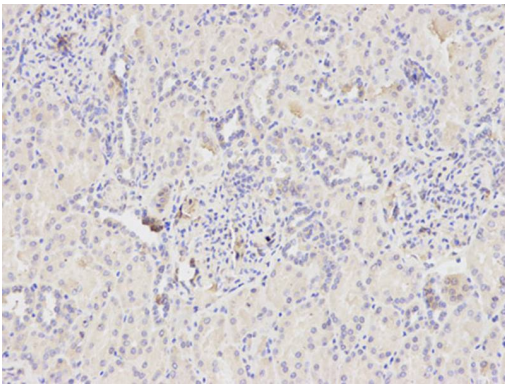
Western blot analysis of extracts of mouse kidney cell line, using CYCS antibody.



Immunohistochemical analysis of paraffin-embedded Colon cancer using CYCS antibody.



Immunohistochemical analysis of paraffin-embedded human thyroid cancer using CYCS antibody at dilution of 1:200 (200x lens).



Immunohistochemical analysis of paraffin-embedded human kidney using CYCS antibody at dilution of 1:200 (200x lens).

Background

Cytochrome c is a well conserved electron-transport protein and is part of the respiratory chain localized to mitochondrial intermembrane space (1). Upon apoptotic stimulation, cytochrome c released from mitochondria associates with procaspase-9 (47 kDa)/Apaf 1. This complex processes caspase-9 from inactive proenzyme to its active form (2). This event further triggers caspase-3 activation and eventually leads to apoptosis (3).

Note: This product is for in vitro research use only and is not intended for use in humans or animals.