

PROM1 Antibody

Catalog No: #32019

Orders: order@signalwayantibody.comSupport: tech@signalwayantibody.com

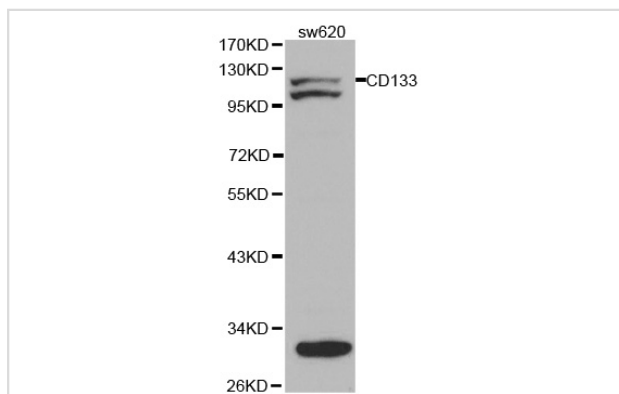
Description

Product Name	PROM1 Antibody
Host Species	Rabbit
Clonality	Polyclonal
Purification	Antibodies were purified by affinity purification using immunogen.
Applications	WB
Species Reactivity	Hu Ms Rt
Specificity	The antibody detects endogenous level of total PROM1 protein.
Immunogen Type	Peptide
Immunogen Description	A synthetic peptide of human PROM1.
Target Name	PROM1
Other Names	CD133; PROM1; PROM11; MSTP061; MCDR2
Accession No.	Swiss-Prot:O43490NCBI Gene ID:8842
SDS-PAGE MW	97KD
Concentration	1.0mg/ml
Formulation	Supplied at 1.0mg/mL in phosphate buffered saline (without Mg ²⁺ and Ca ²⁺), pH 7.4, 150mM NaCl, 0.02% sodium azide and 50% glycerol.
Storage	Store at -20°C

Application Details

Western blotting: 1:500 - 1:2000

Images



Western blot analysis of extracts of SW620 cells, using PROM1 antibody.

Background

This gene encodes a pentaspan transmembrane glycoprotein. The protein localizes to membrane protrusions and is often expressed on adult stem cells, where it is thought to function in maintaining stem cell properties by suppressing differentiation. Mutations in this gene have been shown to result in retinitis pigmentosa and Stargardt disease. Expression of this gene is also associated with several types of cancer. This gene is expressed from at least five alternative promoters that are expressed in a tissue-dependent manner. Multiple transcript variants encoding different isoforms have been

found for this gene.

Note: This product is for in vitro research use only and is not intended for use in humans or animals.