

BVES Antibody

Catalog No: #32017

Orders: order@signalwayantibody.comSupport: tech@signalwayantibody.com

Description

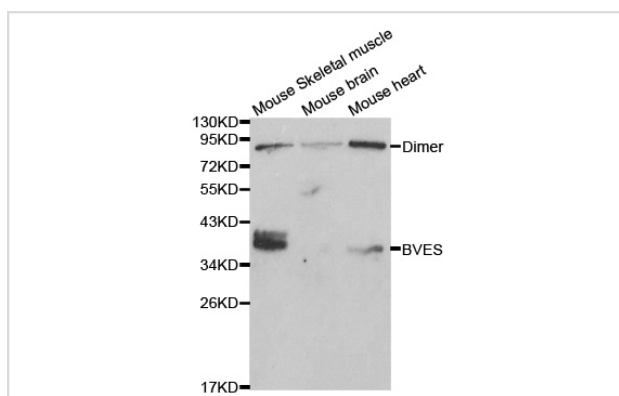
Product Name	BVES Antibody
Host Species	Rabbit
Clonality	Polyclonal
Purification	Antibodies were purified by affinity purification using immunogen.
Applications	WB IHC
Species Reactivity	Hu
Specificity	The antibody detects endogenous level of total BVES protein.
Immunogen Type	Recombinant Protein
Immunogen Description	Recombinant Protein of human BVES.
Target Name	BVES
Other Names	BVES; Popeyeprotein1; POPDC1; POP1; HBVES
Accession No.	Swiss-Prot:Q8NE79NCBI Gene ID:11149
SDS-PAGE MW	41KD
Concentration	1.0mg/ml
Formulation	Supplied at 1.0mg/mL in phosphate buffered saline (without Mg ²⁺ and Ca ²⁺), pH 7.4, 150mM NaCl, 0.02% sodium azide and 50% glycerol.
Storage	Store at -20°C

Application Details

Western blotting: 1:500 - 1:2000

Immunohistochemistry: 1:50 - 1:200

Images



Western blot analysis of extracts of various cell lines, using BVES antibody.

Background

This gene encodes a member of the POP family of proteins containing three putative transmembrane domains. This gene is expressed in cardiac and skeletal muscle and may play an important role in development of these tissues. The mouse ortholog may be involved in the regeneration of adult

skeletal muscle and may act as a cell adhesion molecule in coronary vasculogenesis. Three transcript variants encoding the same protein have been found for this gene.

Note: This product is for in vitro research use only and is not intended for use in humans or animals.