

ACR Antibody

Catalog No: #31300

Package Size: #31300-1 50ul #31300-2 100ul

Orders: order@signalwayantibody.com

Support: tech@signalwayantibody.com

Description

Product Name	ACR Antibody
Host Species	Rabbit
Clonality	Polyclonal
Applications	E WB
Species Reactivity	Hu
Specificity	The antibody detects endogenous level of total ACR protein.
Immunogen Type	Peptide-KLH
Immunogen Description	Synthetic peptide corresponding to a region derived from 407-421 amino acids of human acrosin
Target Name	ACR
Other Names	Acrosin
Accession No.	Genbank No.: NP_001088
Formulation	Supplied at 0.6mg/mL in phosphate buffered saline (without Mg ²⁺ and Ca ²⁺), pH 7.3, 0.05% sodium azide and 50% glycerol.
Storage	Store at -20°C/1 year

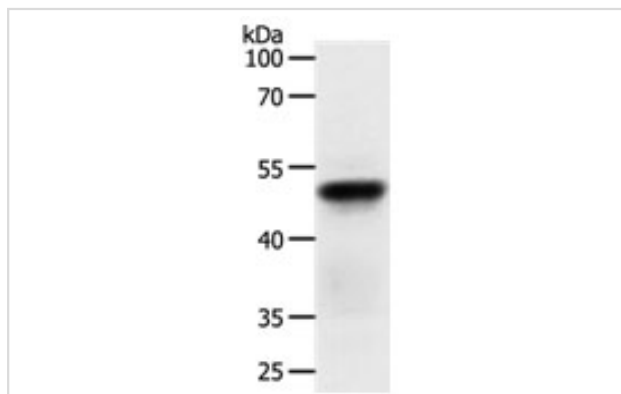
Application Details

Predicted MW: 46kd

ELISA: 1:1000-1:2000

Western blotting: 1:200-1:1000

Images



Gel: 12%SDS-PAGE

Lysate: 50 µg Human fetal lung tissue lysate

Primary antibody: 1/200 dilution

Secondary antibody: Goat anti Rabbit IgG - H&L (HRP) at 1/10000 dilution

Exposure time: 40 seconds

Background

Acrosin is the major proteinase present in the acrosome of mature spermatozoa. It is a typical serine proteinase with trypsin-like specificity. It is stored in the acrosome in its precursor form, proacrosin. The active enzyme functions in the lysis of the zona pellucida, thus facilitating penetration of the sperm through the innermost glycoprotein layers of the ovum. The mRNA for proacrosin is synthesized only in the postmeiotic stages of

spermatogenesis. In humans proacrosin first appears in the haploid spermatids.

Note: This product is for in vitro research use only and is not intended for use in humans or animals.