

YWHAQ Antibody

Catalog No: #31247

Package Size: #31247-1 50ul #31247-2 100ul

Orders: order@signalwayantibody.com

Support: tech@signalwayantibody.com

Description

| | |
|-----------------------|---|
| Product Name | YWHAQ Antibody |
| Host Species | Rabbit |
| Clonality | Polyclonal |
| Applications | E WB IHC |
| Species Reactivity | Hu Ms |
| Specificity | The antibody detects endogenous level of total YWHAQ protein. |
| Immunogen Type | Peptide-KLH |
| Immunogen Description | Synthetic peptide corresponding to a region derived from 140-154 amino acids of Human tyrosine 3-monooxygenase/tryptophan 5-monooxygenase activation protein, theta polypeptide |
| Target Name | YWHAQ |
| Other Names | tyrosine 3-monooxygenase/tryptophan 5-monooxygenase activation protein, theta polypeptide, 1C5, HS1, 14-3-3 |
| Accession No. | Genbank No.: NP_006817 |
| Formulation | Supplied at 0.6mg/mL in phosphate buffered saline (without Mg ²⁺ and Ca ²⁺), pH 7.3, 0.05% sodium azide and 50% glycerol. |
| Storage | Store at -20°C/1 year |

Application Details

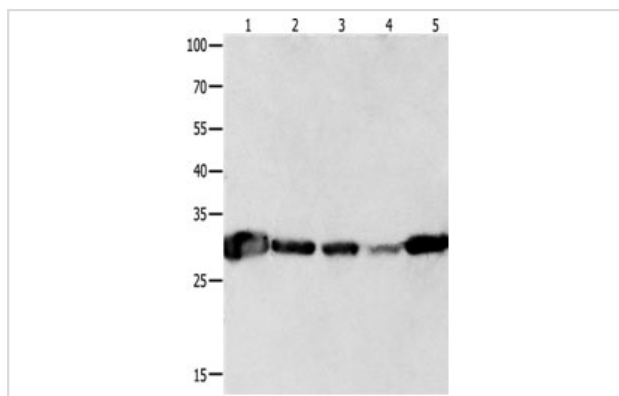
Predicted MW: 28kd

ELISA: 1:1000-1:5000

Western blotting: 1:500-1:2000

Immunohistochemistry: 1:25-1:100

Images



Gel: 10%+12% SDS-PAGE

Lane1: Mouse brain tissue lysate

Lane2: A549 cell lysate

Lane3: Human lymphoma tissue lysate

Lane4: NIH/3T3 cell lysate

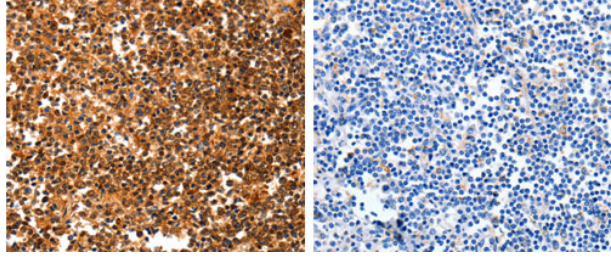
Lane5: Human colon cancer tissue lysate

Lysates: 40 µg per lane

Primary antibody: 1/300 dilution

Secondary antibody: Goat anti Rabbit IgG - H&L (HRP) at 1/10000 dilution

Exposure time: 5 seconds



The image on the left is immunohistochemistry of paraffin-embedded Human tonsil tissue using 31247 (YWHAQ Antibody) at dilution 1/20, on the right is treated with the synthetic peptide.

Background

This gene product belongs to the 14-3-3 family of proteins which mediate signal transduction by binding to phosphoserine-containing proteins. This highly conserved protein family is found in both plants and mammals, and this protein is 99% identical to the mouse and rat orthologs. This gene is upregulated in patients with amyotrophic lateral sclerosis. It contains in its 5' UTR a 6 bp tandem repeat sequence which is polymorphic, however, there is no correlation between the repeat number and the disease.?

Note: This product is for in vitro research use only and is not intended for use in humans or animals.