

MCMBP Antibody

Catalog No: #31234

Package Size: #31234-1 50ul #31234-2 100ul

Orders: order@signalwayantibody.com

Support: tech@signalwayantibody.com

Description

Product Name	MCMBP Antibody
Host Species	Rabbit
Clonality	Polyclonal
Applications	E WB IHC
Species Reactivity	Hu
Specificity	The antibody detects endogenous level of total MCMBP protein.
Immunogen Type	Peptide
Immunogen Description	Synthetic peptide peptide corresponding to a region derived from 176-190 amino acids of human minichromosome maintenance complex binding protein
Target Name	MCMBP
Other Names	minichromosome maintenance complex binding protein, MCM-BP, C10orf119
Accession No.	Genbank No.: NP_079110
Formulation	Supplied at 2.2mg/mL in phosphate buffered saline (without Mg ²⁺ and Ca ²⁺), pH 7.3, 0.05% sodium azide and 50% glycerol.
Storage	Store at -20°C/1 year

Application Details

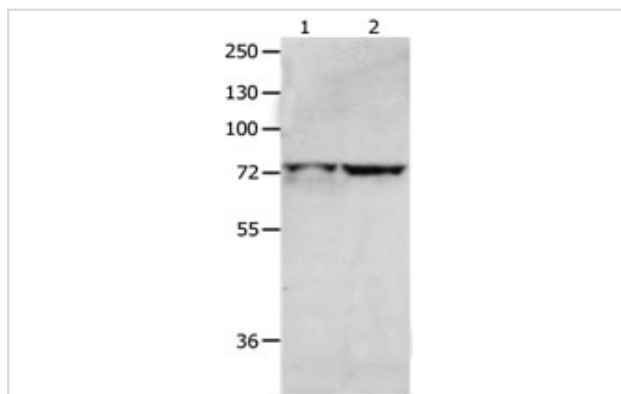
Predicted MW: 73kd

ELISA: 1:2000-1:5000

Western blotting: 1:500-1:2000

Immunohistochemistry: 1:25-1:100

Images



Gel: 8% SDS-PAGE

Lane1: Hela cell lysate

Lane2: 293T cell lysate

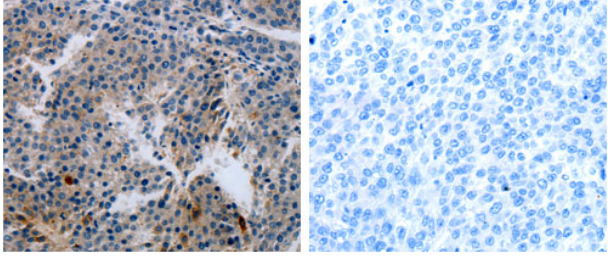
Lysates: 40ug per lane

Primary antibody: 1/1300 dilution

Secondary antibody: Goat anti Rabbit IgG - H&L (HRP) at

1/5000 dilution

Exposure time: 2 minutes



The image on the left is immunohistochemistry of paraffin-embedded Human liver cancer tissue using 31234(MCMBP Antibody) at dilution 1/60, on the right is treated with the synthetic peptide.

Background

This gene encodes a protein which is a component of the hexameric minichromosome maintenance (MCM) complex which regulates initiation and elongation of DNA. Multiple transcript variants encoding different isoforms have been found for this gene.?

Note: This product is for in vitro research use only and is not intended for use in humans or animals.