

## BRAF Antibody

Catalog No: #31224



Package Size: #31224-1 50ul #31224-2 100ul

Orders: order@signalwayantibody.com

Support: tech@signalwayantibody.com

## Description

Product Name	BRAF Antibody
Host Species	Rabbit
Clonality	Polyclonal
Applications	E WB IHC
Species Reactivity	Hu Ms
Specificity	The antibody detects endogenous level of total BRAF protein.
Immunogen Type	Peptide
Immunogen Description	Synthetic peptide corresponding to a region derived from 591-607 amino acids of Human v-raf murine sarcoma viral oncogene homolog B1
Target Name	BRAF
Other Names	V-raf murine sarcoma viral oncogene homolog B1, NS7, BRAF1, RAFB1, B-RAF1
Accession No.	Genbank No.: NP_004324
Formulation	Supplied at 2.1mg/mL in phosphate buffered saline (without Mg <sup>2+</sup> and Ca <sup>2+</sup> ), pH 7.3, 0.05% sodium azide and 50% glycerol.
Storage	Store at -20°C/1 year

## Application Details

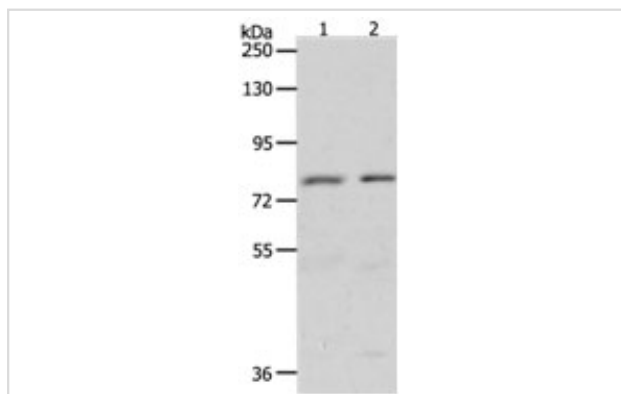
Predicted MW: 84kd

ELISA: 1:1000-1:5000

Western blotting: 1:500-1:2000

Immunohistochemistry: 1:50-1:200

## Images



Gel: 8%SDS-PAGE

Lane1: Hela cell lysate

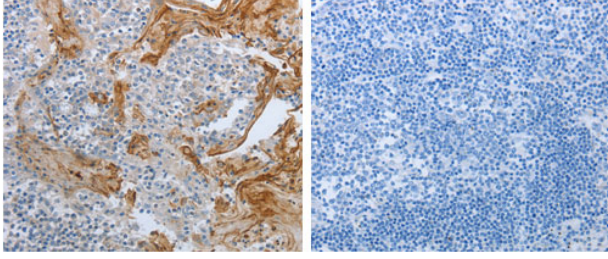
Lane2: HT-29 cell lysate

Lysates: 50 ug per lane

Primary antibody: 1/1400 dilution

Secondary antibody: Goat anti Rabbit IgG - H&amp;L (HRP) at 1/10000 dilution

Exposure time: 5 minutes



The image on the left is immunohistochemistry of paraffin-embedded human tonsil tissue using 31224 (BRAF Antibody) at dilution 1/60, on the right is treated with the synthetic peptide.

## Background

This gene encodes a protein belonging to the raf/mil family of serine/threonine protein kinases. This protein plays a role in regulating the MAP kinase/ERKs signaling pathway, which affects cell division, differentiation, and secretion. Mutations in this gene are associated with cardiofaciocutaneous syndrome, a disease characterized by heart defects, mental retardation and a distinctive facial appearance. Mutations in this gene have also been associated with various cancers, including non-Hodgkin lymphoma, colorectal cancer, malignant melanoma, thyroid carcinoma, non-small cell lung carcinoma, and adenocarcinoma of lung. A pseudogene, which is located on chromosome X, has been identified for this gene.

Note: This product is for in vitro research use only and is not intended for use in humans or animals.