

EDNRB Antibody

Catalog No: #31191



Package Size: #31191-1 50ul #31191-2 100ul

Orders: order@signalwayantibody.com

Support: tech@signalwayantibody.com

Description

Product Name	EDNRB Antibody
Host Species	Rabbit
Clonality	Polyclonal
Applications	E WB IHC
Species Reactivity	Hu
Specificity	The antibody detects endogenous level of total EDNRB protein.
Immunogen Type	Peptide
Immunogen Description	Synthetic peptide peptide corresponding to a region derived from 70-84 amino acids of human endothelin receptor type B
Target Name	EDNRB
Other Names	endothelin receptor type B, ETB, ET-B, ETBR, ETRB, HSCR, WS4A, ABCDS, ET-BR, HSCR2
Accession No.	Genbank No.: NP_003982
Formulation	Supplied at 1mg/mL in phosphate buffered saline (without Mg ²⁺ and Ca ²⁺), pH 7.3, 0.05% sodium azide and 50% glycerol.
Storage	Store at -20°C/1 year

Application Details

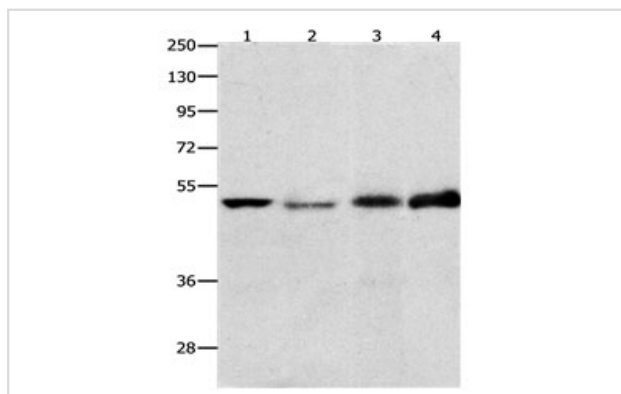
Predicted MW: 50kd

ELISA: 1:2000-1:5000

Western blotting: 1:500-1:2000

Immunohistochemistry: 1:25-1:100

Images



Gel: 10% SDS-PAGE

Lane1: Human fetal lung tissue lysate

Lane2: Human fetal intestine tissue lysate

Lane3: Human lung tissue lysate

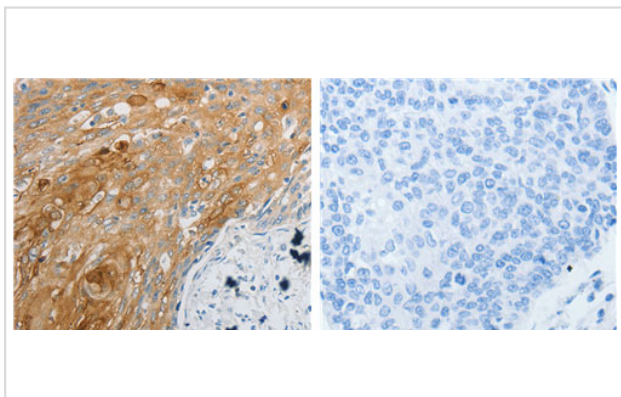
Lane4: Hela cell lysate

Lysates: 40ug per lane

Primary antibody: 1/500 dilution

Secondary antibody: Goat anti Rabbit IgG - H&L (HRP) at 1/5000 dilution

Exposure time: 1 minute



The image on the left is immunohistochemistry of paraffin-embedded Human cervical cancer tissue using 31191 (EDNRB Antibody) at dilution 1/30, on the right is treated with the synthetic peptide.

Background

The protein encoded by this gene is a G protein-coupled receptor which activates a phosphatidylinositol-calcium second messenger system. Its ligand, endothelin, consists of a family of three potent vasoactive peptides: ET1, ET2, and ET3. Studies suggest that the multigenic disorder, Hirschsprung disease type 2, is due to mutations in the endothelin receptor type B gene. Alternatively spliced transcript variants encoding different isoforms have been found for this gene.

Note: This product is for in vitro research use only and is not intended for use in humans or animals.