

## AVEN Antibody

Catalog No: #31160

Package Size: #31160-1 50ul #31160-2 100ul

Orders: order@signalwayantibody.com

Support: tech@signalwayantibody.com

## Description

Product Name	AVEN Antibody
Host Species	Rabbit
Clonality	Polyclonal
Applications	E WB
Species Reactivity	Hu Ms
Specificity	The antibody detects endogenous level of total AVEN protein.
Immunogen Type	Peptide-KLH
Immunogen Description	Synthetic peptide corresponding to a region derived from 339-353 amino acids of Human Apoptosis, caspase activation inhibitor
Target Name	AVEN
Other Names	Apoptosis, caspase activation inhibitor, PDCD12
Accession No.	Genbank No.: NP_065104
Formulation	Supplied at 0.8mg/mL in phosphate buffered saline (without Mg <sup>2+</sup> and Ca <sup>2+</sup> ), pH 7.3, 0.05% sodium azide and 50% glycerol.
Storage	Store at -20°C/1 year

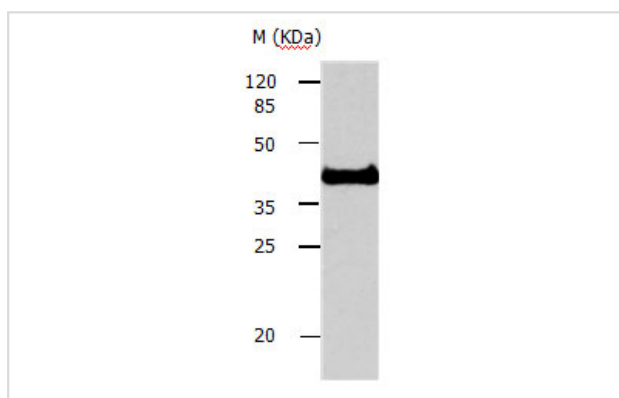
## Application Details

Predicted MW: 39kd

ELISA: 1:500-1:5000

Western blotting: 1:500-1:1000

## Images



Gel: 10%SDS-PAGE

Lysate: 40 µg Jurkat cell lysate

Primary antibody: 1/400 dilution

Secondary antibody: Donkey anti Rabbit IgG - H&amp;L (HRP) at 1/5000 dilution

Exposure time: 50 seconds

## Background

Aven binds to both Bcl-x(L) and the caspase regulator Apaf-1, which can supported that Bcl-x(L) inhibits cell death at a late (postmitochondrial) step in the death pathway. Identified in a yeast two-hybrid screen, Aven inhibited the proteolytic activation of caspases in a cell-free extract and suppressed

apoptosis induced by Apaf-1 plus caspase-9. Expressing highly in the testis, ovary, and thymus .

---

Note: This product is for in vitro research use only and is not intended for use in humans or animals.