

RALB Antibody

Catalog No: #31152



Package Size: #31152-1 50ul #31152-2 100ul

Orders: order@signalwayantibody.comSupport: tech@signalwayantibody.com

Description

Product Name	RALB Antibody
Host Species	Rabbit
Clonality	Polyclonal
Applications	E WB
Species Reactivity	Hu Ms
Specificity	The antibody detects endogenous level of total RALB protein.
Immunogen Type	Peptide-KLH
Immunogen Description	Synthetic peptide corresponding to a region derived from 142-156 amino acids of Human Ras-related protein Ral-B
Target Name	RALB
Other Names	Ras-related protein Ral-B
Accession No.	Genbank No.: NP_002872
Formulation	Supplied at 0.7mg/mL in phosphate buffered saline (without Mg ²⁺ and Ca ²⁺), pH 7.3, 0.05% sodium azide and 50% glycerol.
Storage	Store at -20°C/1 year

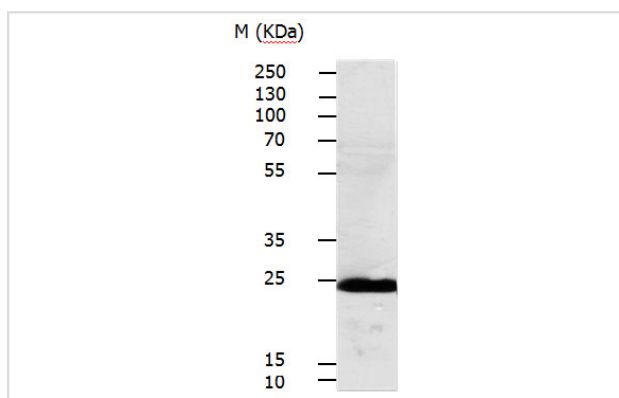
Application Details

Predicted MW: 24kd

ELISA: 1:500-1:5000

Western blotting: 1:500-1:2000

Images



Gel: 10%SDS-PAGE

Lysate: 30 µg Mouse lung tissue lysate

Primary antibody: 1/250 dilution

Secondary antibody: Goat anti Rabbit IgG - H&L (HRP) at 1/3000 dilution

Exposure time: 30 seconds

Background

This gene encodes a GTP-binding protein that belongs to the small GTPase superfamily and Ras family of proteins. GTP-binding proteins mediate the transmembrane signaling initiated by the occupancy of certain cell surface receptors.

Note: This product is for in vitro research use only and is not intended for use in humans or animals.