

PYGB Antibody

Catalog No: #31151



Package Size: #31151-1 50ul #31151-2 100ul

Orders: order@signalwayantibody.comSupport: tech@signalwayantibody.com

Description

Product Name	PYGB Antibody
Host Species	Rabbit
Clonality	Polyclonal
Applications	E WB
Species Reactivity	Hu
Specificity	The antibody detects endogenous level of total PYGB protein.
Immunogen Type	Peptide-KLH
Immunogen Description	Synthetic peptide corresponding to a region derived from 1-15 amino acids of Human phosphorylase, glycogen; brain
Target Name	PYGB
Other Names	Phosphorylase, glycogen; brain, GPBB
Accession No.	Genbank No.: NP_002853
Formulation	Supplied at 1.1mg/mL in phosphate buffered saline (without Mg ²⁺ and Ca ²⁺), pH 7.3, 0.05% sodium azide and 50% glycerol.
Storage	Store at -20°C/1 year

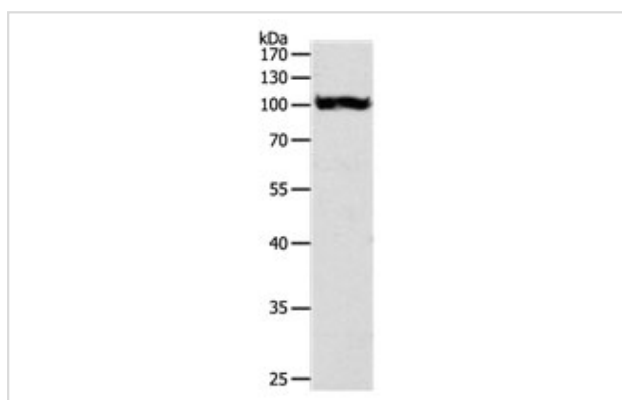
Application Details

Predicted MW: 97kd

ELISA: 1:1000-1:5000

Western blotting: 1:500-1:2000

Images



Gel: 8%SDS-PAGE

Lysate: 40 µg HT-29 cell lysate

Primary antibody: 1/550 dilution

Secondary antibody: Goat anti Rabbit IgG - H&L (HRP) at 1/10000 dilution

Exposure time: 10 seconds

Background

The protein encoded by this gene is a glycogen phosphorylase found predominantly in the brain. The encoded protein forms homodimers which can associate into homotetramers, the enzymatically active form of glycogen phosphorylase. The activity of this enzyme is positively regulated by AMP and

negatively regulated by ATP, ADP, and glucose-6-phosphate. This enzyme catalyzes the rate-determining step in glycogen degradation

Note: This product is for in vitro research use only and is not intended for use in humans or animals.