

## RHOB Antibody

Catalog No: #31144

Package Size: #31144-1 50ul #31144-2 100ul

Orders: order@signalwayantibody.com

Support: tech@signalwayantibody.com

## Description

Product Name	RHOB Antibody
Host Species	Rabbit
Clonality	Polyclonal
Applications	E WB
Species Reactivity	Hu Ms Rt
Specificity	The antibody detects endogenous level of total RHOB protein.
Immunogen Type	Peptide
Immunogen Description	Synthetic peptide corresponding to a region derived from 179-188 amino acids of Human Ras homolog family member B
Target Name	RHOB
Other Names	Ras homolog family member B, ARH6, ARHB, RHOH6
Accession No.	Genbank No.: NP_004031
Formulation	Supplied at 0.8mg/mL in phosphate buffered saline (without Mg <sup>2+</sup> and Ca <sup>2+</sup> ), pH 7.3, 0.05% sodium azide and 50% glycerol.
Storage	Store at -20°C/1 year

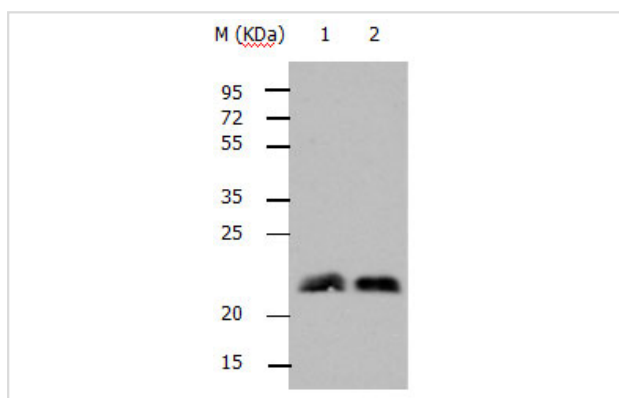
## Application Details

Predicted MW: 22kd

ELISA: 1:2000-1:10000

Western blotting: 1:1000-1:2000

## Images



Gel: 10%SDS-PAGE

Lane1: Mouse brain tissue lysate

Lane2: Human fetal brain tissue lysate

Lysates: 40 ug per lane

Primary antibody: 1/800 dilution

Secondary antibody: Donkey anti Rabbit IgG - H&amp;L (HRP) at 1/3000 dilution

Exposure time: 15 seconds

## Background

Ras homolog gene family, member B, also known as RHOB, is a protein which in humans is encoded by the RHOB gene. RHOB is a member of the Rho GTP-binding protein family. Mediates apoptosis in neoplastically transformed cells after DNA damage. It is not necessary for development but

affects cell adhesion and growth factor signaling in transformed cells. It plays a negative role in tumorigenesis as deletion causes tumor formation. It is involved in intracellular protein trafficking of a number of proteins, and serves as a microtubule-dependent signal that is required for the myosin contractile ring formation during cell cycle cytokinesis. Required for genotoxic stress-induced cell death in breast cancer cells.

---

Note: This product is for in vitro research use only and is not intended for use in humans or animals.