

ADIPOQ Antibody

Catalog No: #31141

Package Size: #31141-1 50ul #31141-2 100ul

Orders: order@signalwayantibody.com

Support: tech@signalwayantibody.com

Description

Product Name	ADIPOQ Antibody
Host Species	Rabbit
Clonality	Polyclonal
Applications	E WB
Species Reactivity	Hu Ms
Specificity	The antibody detects endogenous level of total ADIPOQ protein.
Immunogen Type	Peptide-KLH
Immunogen Description	Synthetic peptide corresponding to a region derived from 230-244 amino acids of Human adiponectin, C1Q and collagen domain containing
Target Name	ADIPOQ
Other Names	Adiponectin, C1Q and collagen domain containing, ACDC, ADPN, APM1, APM-1, GBP28, ACRP30, ADIPQTL1
Accession No.	Genbank No.: NP_004788
Formulation	Supplied at 0.5mg/mL in phosphate buffered saline (without Mg ²⁺ and Ca ²⁺), pH 7.3, 0.05% sodium azide and 50% glycerol.
Storage	Store at -20°C/1 year

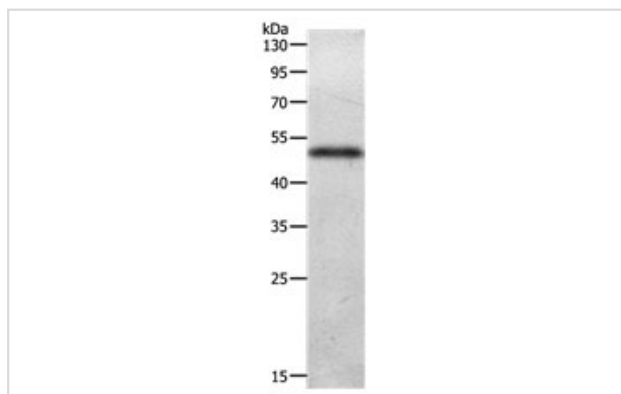
Application Details

Predicted MW: 26kd

ELISA: 1:1000-1:2000

Western blotting: 1:200-1:1000

Images



Gel: 10%SDS-PAGE

Lysate: 40 µg Human liver cancer tissue lysate

Primary antibody: 1/300 dilution

Secondary antibody: Goat anti Rabbit IgG - H&L (HRP) at 1/10000 dilution

Exposure time: 2 minutes

Background

This gene is expressed in adipose tissue exclusively. It encodes a protein with similarity to collagens X and VIII and complement factor C1q. The

encoded protein circulates in the plasma and is involved with metabolic and hormonal processes. Mutations in this gene are associated with adiponectin deficiency. Multiple alternatively spliced variants, encoding the same protein, have been identified.

Note: This product is for in vitro research use only and is not intended for use in humans or animals.