

IMMT Antibody

Catalog No: #31090

Package Size: #31090-1 50ul #31090-2 100ul

Orders: order@signalwayantibody.com

Support: tech@signalwayantibody.com

Description

Product Name	IMMT Antibody
Host Species	Rabbit
Clonality	Polyclonal
Applications	E WB IHC
Species Reactivity	Hu
Specificity	The antibody detects endogenous level of total IMMT protein.
Immunogen Type	Recombinant protein
Immunogen Description	Fusion protein corresponding to a C terminal 300 amino acids of human inner membrane protein, mitochondrial
Target Name	IMMT
Other Names	inner membrane protein, mitochondrial, HMP, P87, P89, PIG4, PIG52, MINOS2, P87/89
Accession No.	Genbank No.: BC002412
Formulation	Supplied at 0.5mg/mL in phosphate buffered saline (without Mg ²⁺ and Ca ²⁺), pH 7.3, 0.05% sodium azide and 50% glycerol.
Storage	Store at -20°C/1 year

Application Details

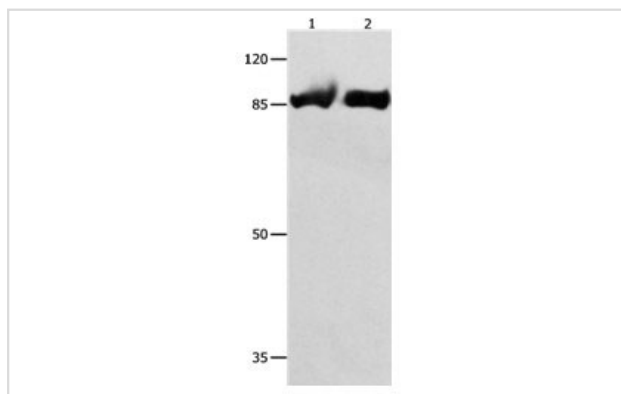
Predicted MW: 84kd

ELISA: 1:2000-1:5000

Western blotting: 1:500-1:2000

Immunohistochemistry: 1:15-1:50

Images



Gel: 8%SDS-PAGE

Lane1: HeLa cell lysate

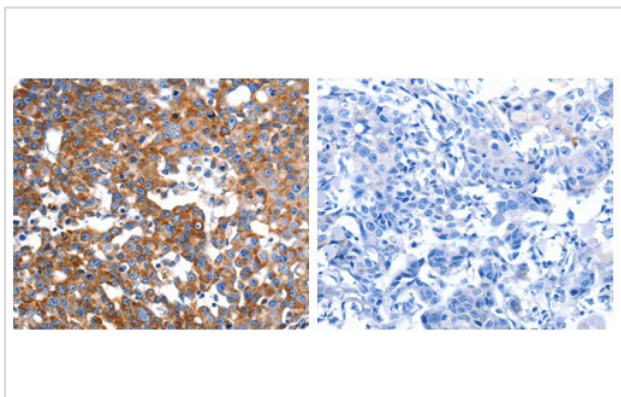
Lane2: 231 cell lysate

Lysates: 40 ug per lane

Primary antibody: 1/250 dilution

Secondary antibody: Goat anti Rabbit IgG - H&L (HRP) at 1/10000 dilution

Exposure time: 1 minute



The image on the left is immunohistochemistry of paraffin-embedded Human breast cancer tissue using 31090 (IMMT Antibody) at dilution 1/12, on the right is treated with the fusion protein.

Background

Mitochondrial inner membrane protein is a protein that in humans is encoded by the IMMT gene. IMMT has been shown to interact with BAT2. The mitochondrial inner membrane (IM) serves as the site for ATP production by hosting the oxidative phosphorylation complex machinery most notably on the crista membranes. Disruption of the crista structure has been implicated in a variety of cardiovascular and neurodegenerative diseases.

Note: This product is for in vitro research use only and is not intended for use in humans or animals.