

CRP Antibody

Catalog No: #31062

Package Size: #31062-1 50ul #31062-2 100ul

Orders: order@signalwayantibody.com

Support: tech@signalwayantibody.com

Description

Product Name	CRP Antibody
Host Species	Rabbit
Clonality	Polyclonal
Applications	E WB IHC
Species Reactivity	Hu
Specificity	The antibody detects endogenous level of total CRP protein.
Immunogen Type	Recombinant Protein
Immunogen Description	Fusion protein corresponding to a region derived from 2-91 amino acids of human C-reactive protein, pentraxin-related
Target Name	CRP
Other Names	C-reactive protein, pentraxin-related, PTX1
Accession No.	Genbank No.: BC020766
Formulation	Supplied at 2.8mg/mL in phosphate buffered saline (without Mg ²⁺ and Ca ²⁺), pH 7.3, 0.05% sodium azide and 50% glycerol.
Storage	Store at -20°C/1 year

Application Details

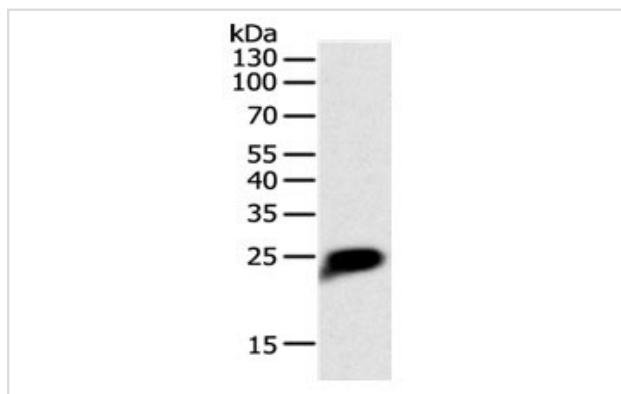
Predicted MW: 25kd

ELISA: 1:2000-1:10000

Western blotting: 1:1000-1:5000

Immunohistochemistry: 1:100-1:300

Images



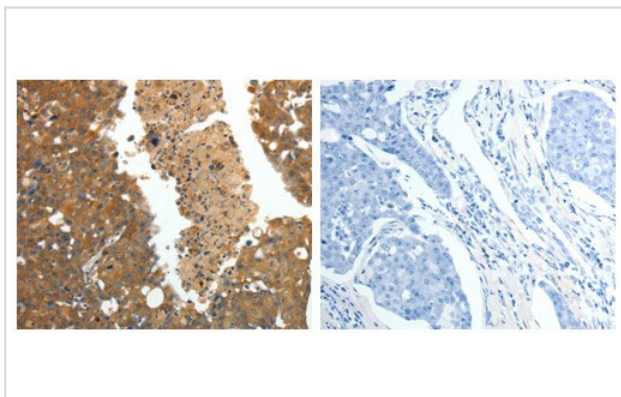
Gel: 12%SDS-PAGE

Lysate: 40 µg Human liver cancer tissue lysate

Primary antibody: 1/1400 dilution

Secondary antibody: Goat anti Rabbit IgG - H&L (HRP) at 1/10000 dilution

Exposure time: 1 minute



The image on the left is immunohistochemistry of paraffin-embedded human breast cancer tissue using 31062 (CRP Antibody) at dilution 1/80, on the right is treated with the fusion protein.

Background

The protein encoded by this gene belongs to the pentaxin family. It is involved in several host defense related functions based on its ability to recognize foreign pathogens and damaged cells of the host and to initiate their elimination by interacting with humoral and cellular effector systems in the blood. Consequently, the level of this protein in plasma increases greatly during acute phase response to tissue injury, infection, or other inflammatory stimuli.

Note: This product is for in vitro research use only and is not intended for use in humans or animals.