

# CTSZ Antibody

Catalog No: #31047



Package Size: #31047-1 50ul #31047-2 100ul

Orders: [order@signalwayantibody.com](mailto:order@signalwayantibody.com)Support: [tech@signalwayantibody.com](mailto:tech@signalwayantibody.com)

## Description

Product Name	CTSZ Antibody
Host Species	Rabbit
Clonality	Polyclonal
Applications	E WB IHC
Species Reactivity	Hu
Specificity	The antibody detects endogenous level of total CTSZ protein.
Immunogen Type	Recombinant Protein
Immunogen Description	Fusion protein corresponding to a region derived from 62-303 amino acids of Human Cathepsin Z
Target Name	CTSZ
Other Names	Cathepsin Z, CTSX
Accession No.	Genbank No.: BC042168
Formulation	Supplied at 0.7mg/mL in phosphate buffered saline (without Mg <sup>2+</sup> and Ca <sup>2+</sup> ), pH 7.3, 0.05% sodium azide and 50% glycerol.
Storage	Store at -20°C/1 year

## Application Details

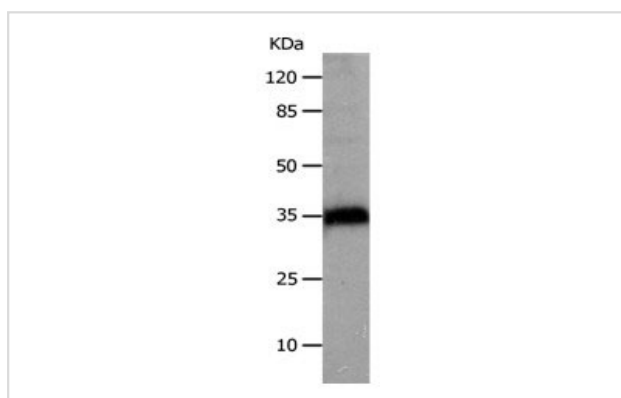
Predicted MW: 34kd

ELISA: 1:500-1:2000

Western blotting: 1:500-1:1000

Immunohistochemistry: 1:10-1:50

## Images



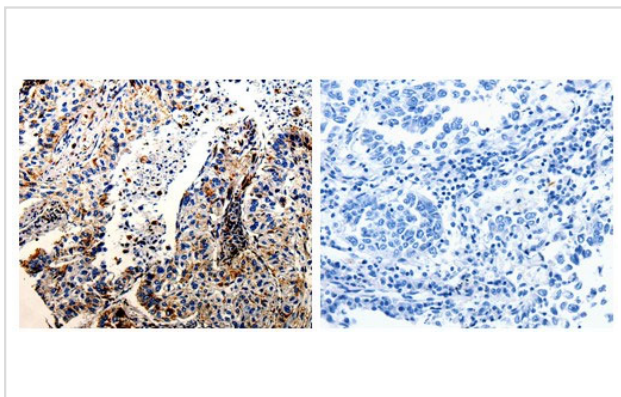
Gel: 8%SDS-PAGE

Lysate: 30 µg Hela cell lysate

Primary antibody: 1/500 dilution

Secondary antibody: Donkey anti Rabbit IgG - H&amp;L (HRP) at 1/3000 dilution

Exposure time: 20 seconds



The image on the left is immunohistochemistry of paraffin-embedded Human lung cancer tissue using 31047 (CTSZ Antibody) at dilution 1/25, on the right is treated with the fusion protein.

## Background

The protein encoded by this gene is a lysosomal cysteine proteinase and member of the peptidase C1 family. It exhibits both carboxy-monopeptidase and carboxy-dipeptidase activities. The encoded protein has also been known as cathepsin X and cathepsin P. This gene is expressed ubiquitously in cancer cell lines and primary tumors and, like other members of this family, may be involved in tumorigenesis.

Note: This product is for in vitro research use only and is not intended for use in humans or animals.