

# AFP Antibody

Catalog No: #31001



Package Size: #31001-1 50ul #31001-2 100ul

Orders: [order@signalwayantibody.com](mailto:order@signalwayantibody.com)

Support: [tech@signalwayantibody.com](mailto:tech@signalwayantibody.com)

## Description

Product Name	AFP Antibody
Host Species	Rabbit
Clonality	Polyclonal
Applications	E WB IHC
Species Reactivity	Hu
Specificity	The antibody detects endogenous level of total AFP protein.
Immunogen Type	Recombinant Protein
Immunogen Description	Fusion protein corresponding to a region derived from 260-609 amino acids of human alpha-fetoprotein
Target Name	AFP
Other Names	alpha-fetoprotein, FETA, HPAFP

## Application Details

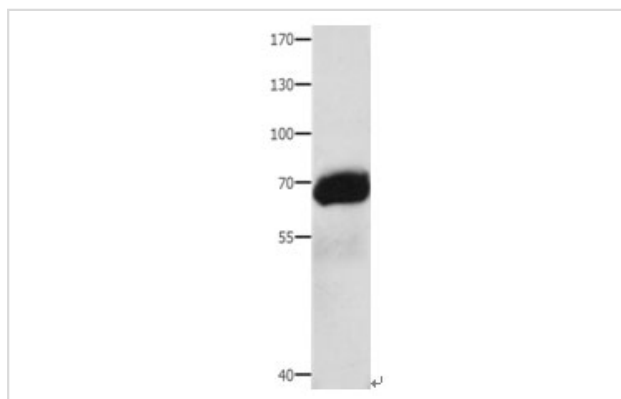
Predicted MW: 69kd

ELISA: 1:2000-1:10000

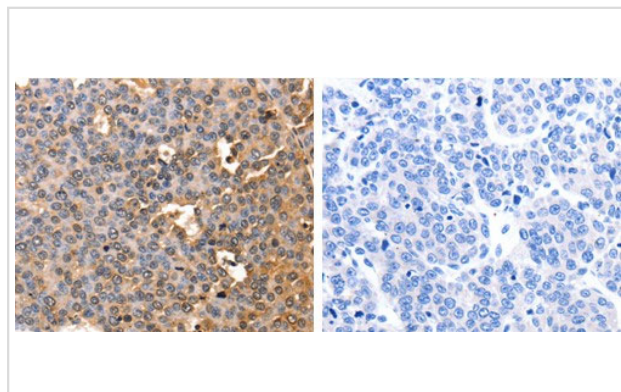
Western blotting: 1:1000-1:5000

Immunohistochemistry: 1:50-1:200

## Images



Gel: 8%SDS-PAGE  
 Lysate: 40 µg Human liver cancer tissue lysate  
 Primary antibody: 1/1000 dilution  
 Secondary antibody: Goat anti Rabbit IgG - H&L (HRP) at 1/10000 dilution  
 Exposure time: 30 seconds



The image on the left is immunohistochemistry of paraffin-embedded Human liver cancer tissue using 31001 (AFP Antibody) at dilution 1/60, on the right is treated with the fusion protein.

## Background

---

This gene encodes alpha-fetoprotein, a major plasma protein produced by the yolk sac and the liver during fetal life. Alpha-fetoprotein expression in adults is often associated with hepatoma or teratoma. However, hereditary persistence of alpha-fetoprotein may also be found in individuals with no obvious pathology. The protein is thought to be the fetal counterpart of serum albumin, and the alpha-fetoprotein and albumin genes are present in tandem in the same transcriptional orientation on chromosome 4. Alpha-fetoprotein is found in monomeric as well as dimeric and trimeric forms, and binds copper, nickel, fatty acids and bilirubin. The level of alpha-fetoprotein in amniotic fluid is used to measure renal loss of protein to screen for spina bifida and anencephaly.

---

Note: This product is for in vitro research use only and is not intended for use in humans or animals.