

HP1-gamma Monoclonal Antibody

Catalog No: #27171



Package Size: #27171-1 50ul #27171-2 100ul #27171-4 25ul

Orders: order@signalwayantibody.comSupport: tech@signalwayantibody.com

Description

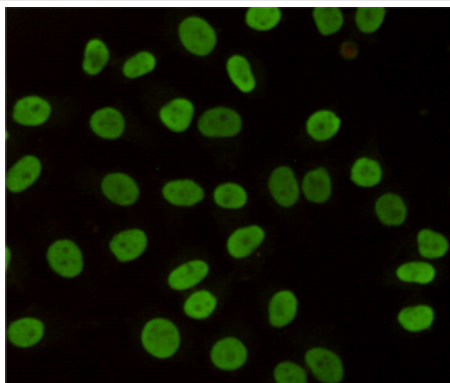
Product Name	HP1-gamma Monoclonal Antibody
Host Species	Mouse
Clonality	Monoclonal
Clone No.	5G10-F7-A12
Isotype	IgG1
Purification	Affinity purified
Applications	WB ICC IP IHC
Species Reactivity	Ms Hu Mk Hm Rt
Specificity	This antibody detects endogenous levels of HP1-gamma and does not cross-react with related proteins.
Immunogen Type	Recombinant Protein
Immunogen Description	Purified recombinant human HP1-gamma protein fragments expressed in E.coli.
Target Name	HP1-gamma
Other Names	CBX 3; CBX3; CBX3_HUMAN; Chromobox homolog 3 (HP1 gamma homolog, Drosophila); Chromobox homolog 3; Chromobox protein homolog 3; GAMMA; HECH; Heterochromatin like protein 1; Heterochromatin protein 1 homolog gamma; Heterochromatin protein HP1 gamma
Accession No.	Uniprot: Q13185 Gene ID: 11335
SDS-PAGE MW	22kd
Formulation	Purified mouse monoclonal antibody in PBS(pH 7.4) containing with 0.02% sodium azide and 50% glycerol.
Storage	store at -20 \wedge C

Application Details

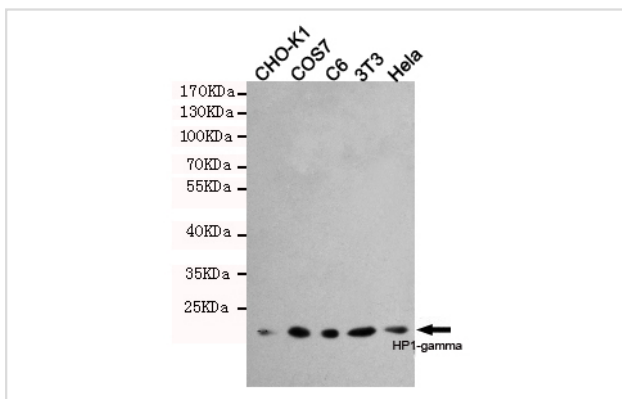
Western blotting: 1:1000

Immunocytochemistry: 1:200

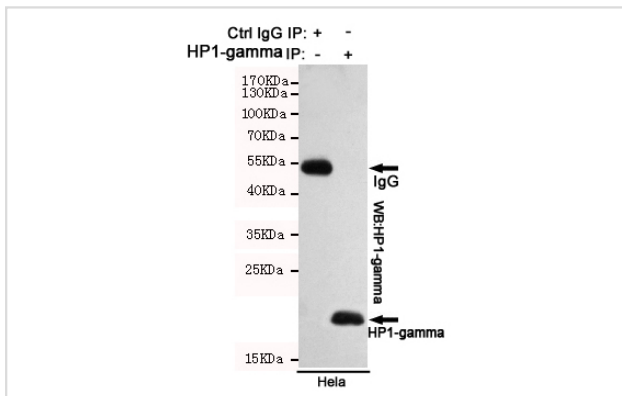
Images



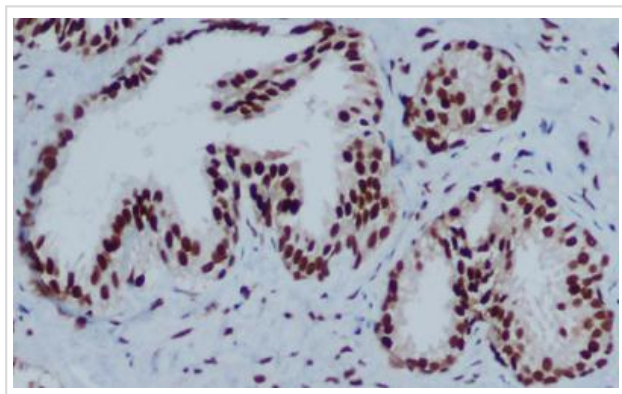
Immunocytochemistry staining of HeLa cells fixed with 4% Paraformaldehyde and using anti-HP1-gamma antibody (dilution 1:200).



Western blot detection of HP1-gamma in HeLa,3T3,C6,COS7 and CHO-K1 cell lysates using HP1-gamma antibody (1:1000 diluted).Predicted band size:22KDa.Observed band size:22KDa.



Immunoprecipitation analysis of HeLa cell lysates using HP1-gamma antibody.



Immunohistochemical analysis of paraffin-embedded Prostate Cancer using HP1-gamma Mouse mAb (1/200 dilution).Antigen retrieval was performed by pressure cooking in citrate buffer (pH 6.0).

Background

Seems to be involved in transcriptional silencing in heterochromatin-like complexes. Recognizes and binds histone H3 tails methylated at 'Lys-9', leading to epigenetic repression. May contribute to the association of the heterochromatin with the inner nuclear membrane through its interaction with lamin B receptor (LBR). Involved in the formation of functional kinetochore through interaction with MIS12 complex proteins.

Note: This product is for in vitro research use only and is not intended for use in humans or animals.