

EEF2 Monoclonal Antibody

Catalog No: #27102

Package Size: #27102-1 50ul #27102-2 100ul

Orders: order@signalwayantibody.com

Support: tech@signalwayantibody.com

Description

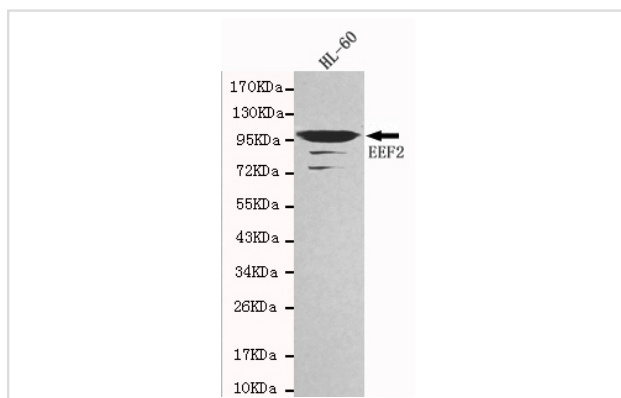
| | |
|-----------------------|---|
| Product Name | EEF2 Monoclonal Antibody |
| Host Species | Mouse |
| Clonality | Monoclonal |
| Clone No. | 4B3-G7-H5 |
| Isotype | IgG2b |
| Purification | Affinity purified |
| Applications | E WB |
| Species Reactivity | Hu Rt Ms |
| Immunogen Type | Recombinant protein |
| Immunogen Description | Purified recombinant human EEF2 protein fragments expressed in E.coli. |
| Target Name | EEF2 |
| Other Names | EF2, EF-2, EEF-2 |
| Formulation | Purified mouse monoclonal in buffer containing 0.1M Tris-Glycine (pH 7.4, 150 mM NaCl) with 0.2% sodium azide, 50%,glycerol |

Application Details

Predicted MW: 95kd

Western blotting: 1:1000

Images



Western blot detection of EEF2 in HL-60 cell lysates using EEF2 antibody (1:1000 diluted).

Predicted band size:95KDa

Observed band size: 95KDa.

Background

This gene encodes a member of the GTP-binding translation elongation factor family. Catalyzes the GTP-dependent ribosomal translocation step during translation elongation. During this step, the ribosome changes from the pre-translocational (PRE) to the post-translocational (POST) state.

Note: This product is for in vitro research use only and is not intended for use in humans or animals.