

# MPI Monoclonal Antibody

Catalog No: #27091



Package Size: #27091-1 50ul #27091-2 100ul

Orders: [order@signalwayantibody.com](mailto:order@signalwayantibody.com)

Support: [tech@signalwayantibody.com](mailto:tech@signalwayantibody.com)

## Description

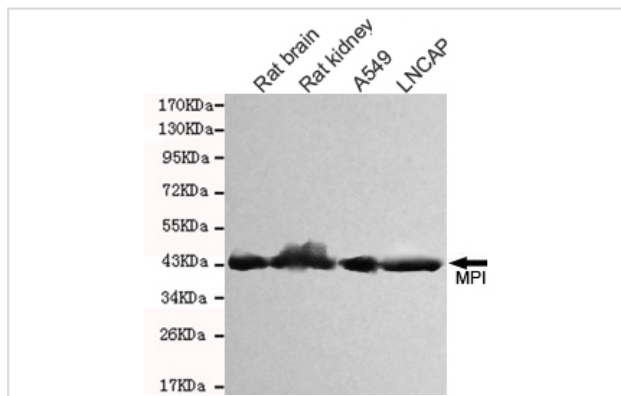
Product Name	MPI Monoclonal Antibody
Host Species	Mouse
Clonality	Monoclonal
Clone No.	4G9-B4-B8
Isotype	IgG1
Purification	Affinity purified
Applications	E WB
Species Reactivity	Hu Ms Rt
Immunogen Type	Recombinant protein
Immunogen Description	Purified recombinant human MPI protein fragments expressed in E.coli.
Target Name	MPI
Other Names	PMI, PMI1, CDG1B
Formulation	Purified mouse monoclonal in buffer containing 0.1M Tris-Glycine (pH 7.4, 150 mM NaCl) with 0.2% sodium azide, 50%,glycerol

## Application Details

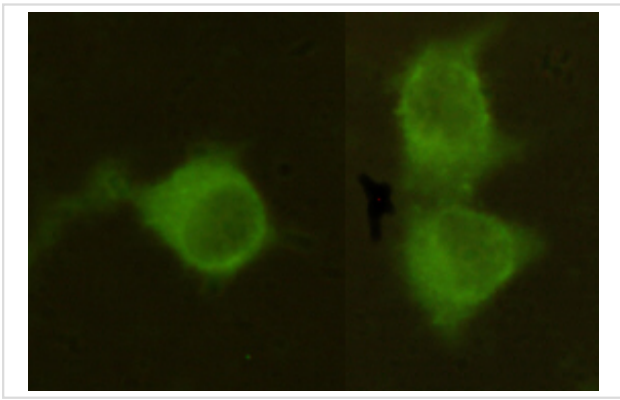
Predicted MW: 54kd

Western blotting: 1:1000

## Images



Western blot detection of MPI in Rat kidney,Rat brain



Immunocytochemistry stain of HeLa using MPI antibody (1:300).

## Background

---

Involved in the synthesis of the GDP-mannose and dolichol-phosphate-mannose required for a number of critical mannosyl transfer reactions.

---

Note: This product is for in vitro research use only and is not intended for use in humans or animals.