

# KIF11 Monoclonal Antibody

Catalog No: #27083



Package Size: #27083-1 50ul #27083-2 100ul

Orders: [order@signalwayantibody.com](mailto:order@signalwayantibody.com)

Support: [tech@signalwayantibody.com](mailto:tech@signalwayantibody.com)

## Description

Product Name	KIF11 Monoclonal Antibody
Host Species	Mouse
Clonality	Monoclonal
Clone No.	4H3-1F12
Isotype	IgG1
Purification	Affinity purified
Applications	E WB ICC
Species Reactivity	Hu D Rt P B Ms
Immunogen Type	Recombinant protein
Immunogen Description	Purified recombinant human KIF11 protein fragments expressed in E.coli.
Target Name	KIF11
Other Names	EG5, HKSP, KNSL1, TRIP5
Formulation	Purified mouse monoclonal in buffer containing 0.1M Tris-Glycine (pH 7.4, 150 mM NaCl) with 0.2% sodium azide, 50%,glycerol

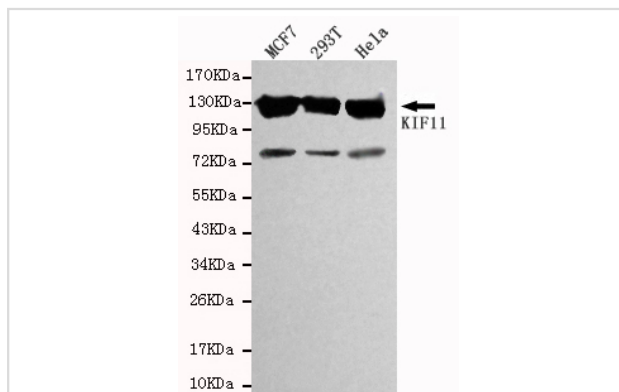
## Application Details

Predicted MW: 130kd

Western blotting: 1:1000

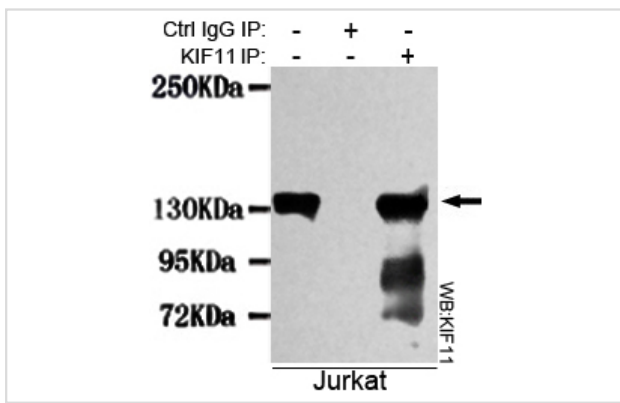
Immunocytochemistry:1:300

## Images



Western blot detection of KIF11 in MCF7,293T&Hela cell lysates using KIF11 antibody (1:1000 diluted).  
 Predicted band size:120KDa.  
 Observed band size:130KDa  
 Additional band size:75K

Immunoprecipitation analysis of Jurkat cell lysates using KIF11 antibody



## Background

Motor protein required for establishing a bipolar spindle. Blocking of KIF11 prevents centrosome migration and arrest cells in mitosis with monoastal microtubule arrays.

Note: This product is for in vitro research use only and is not intended for use in humans or animals.