

# CDC2 Monoclonal Antibody

Catalog No: #27073



Package Size: #27073-1 50ul #27073-2 100ul

Orders: [order@signalwayantibody.com](mailto:order@signalwayantibody.com)

Support: [tech@signalwayantibody.com](mailto:tech@signalwayantibody.com)

## Description

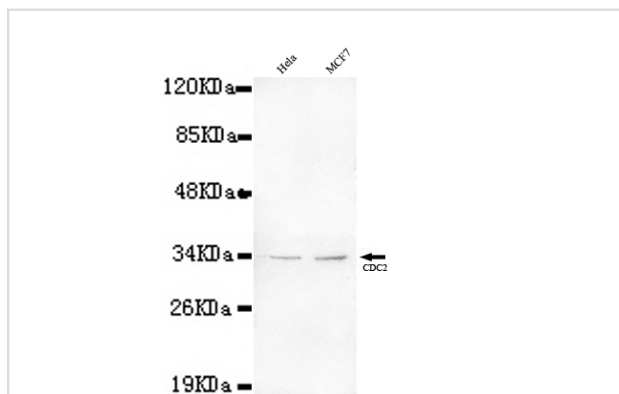
Product Name	CDC2 Monoclonal Antibody
Host Species	Mouse
Clonality	Monoclonal
Isotype	IgG2b
Purification	Purified by antigen-affinity chromatography.
Applications	WB ICC
Species Reactivity	Hu D Rt Ms
Immunogen Type	Recombinant protein
Immunogen Description	Recombinant fragment, corresponding to amino acids 8-298aa of human CDC2.
Target Name	CDC2
Other Names	cyclin-dependent kinase 1 □ p34 protein kinase □ cell cycle controller CDC2 □ cell division protein kinase 1 □ cell division control protein 2 homolog □ cell division cycle 2, G1 to S and G2 to M
Accession No.	UniProt:P06493 NCBI Gene ID:983
Formulation	Purified mouse monoclonal in buffer containing 0.1M Tris-Glycine (pH 7.4, 150 mM NaCl) with 0.2% sodium azide, 50%,glycerol
Storage	store at -20°C

## Application Details

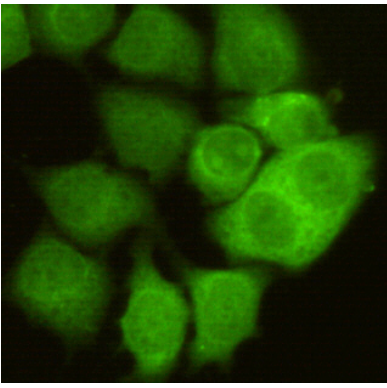
Predicted MW: 34kd

Western blotting: 1:1000

## Images



1:1000 dilution of this antibody detected CDC2 on 40ug of cell lysates



HeLa cells using anti- CDC2 antibody diluted 1:50

---

Note: This product is for in vitro research use only and is not intended for use in humans or animals.