

EPCAM Monoclonal Antibody

Catalog No: #27030

Package Size: #27030-1 50ul #27030-2 100ul

Orders: order@signalwayantibody.comSupport: tech@signalwayantibody.com

Description

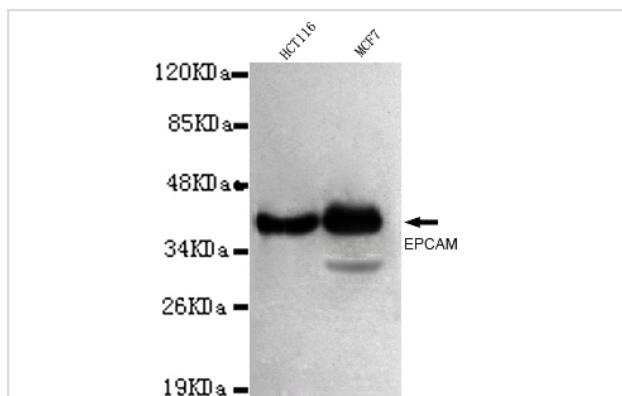
| | |
|-----------------------|--|
| Product Name | EPCAM Monoclonal Antibody |
| Host Species | Mouse |
| Clonality | Monoclonal |
| Isotype | IgG1 |
| Purification | Purified by antigen-affinity chromatography. |
| Applications | WB |
| Species Reactivity | Hu Ms |
| Immunogen Type | Recombinant protein |
| Immunogen Description | Recombinant fragment of human EPCAM (N-terminus). |
| Target Name | EPCAM |
| Other Names | epithelial cell adhesion molecule □ epithelial glycoprotein 314 □ human epithelial glycoprotein-2 □ cell surface glycoprotein Trop-1 □ adenocarcinoma-associated antigen □ tumor-associated calcium signal transducer 1 □ major gastrointestinal |
| Accession No. | UniProt:P16422 NCBI Gene ID:4072 |
| Formulation | Purified mouse monoclonal in buffer containing 0.1M Tris-Glycine (pH 7.4, 150 mM NaCl) with 0.2% sodium azide, 50% glycerol |
| Storage | store at -20°C |

Application Details

Predicted MW: 39kd

Western blotting: 1:1000

Images



1:1000 dilution of this antibody detected EPCAM on 40ug of cell lysates

Note: This product is for in vitro research use only and is not intended for use in humans or animals.