

# Keratin 7(C-term) Monoclonal Antibody

Catalog No: #27028



Package Size: #27028-1 50ul #27028-2 100ul

Orders: [order@signalwayantibody.com](mailto:order@signalwayantibody.com)

Support: [tech@signalwayantibody.com](mailto:tech@signalwayantibody.com)

## Description

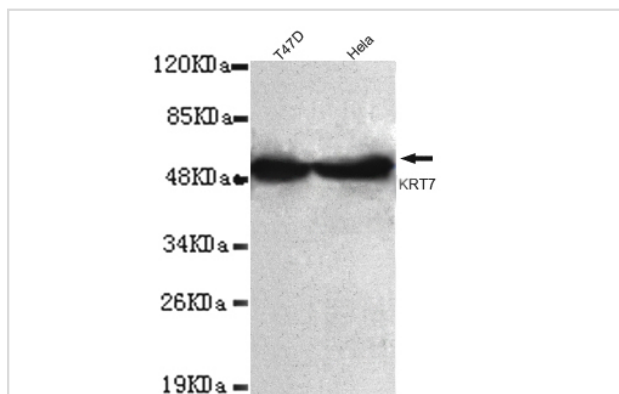
Product Name	Keratin 7(C-term) Monoclonal Antibody
Host Species	Mouse
Clonality	Monoclonal
Isotype	IgG2b
Purification	Purified by antigen-affinity chromatography.
Applications	WB ICC
Species Reactivity	Hu D Ms Rt
Immunogen Type	Recombinant protein
Immunogen Description	Recombinant fragment, , corresponding to amino acids 256aa-415aa of human KRT7 (C-terminus).
Target Name	Keratin 7
Other Names	keratin, type II cytoskeletal 7 □CK-7 □keratin-7 □sarcolectin □cytokeratin 7 □cytokeratin-7 □type-II keratin K7 □type II mesothelial keratin K7 □keratin, 55K type II cytoskeletal □keratin, simple epithelial type I, K7
Accession No.	UniProt:P08729 NCBI Gene ID:3855
Formulation	Purified mouse monoclonal in buffer containing 0.1M Tris-Glycine (pH 7.4, 150 mM NaCl) with 0.2% sodium azide, 50%,glycerol
Storage	store at -20°C

## Application Details

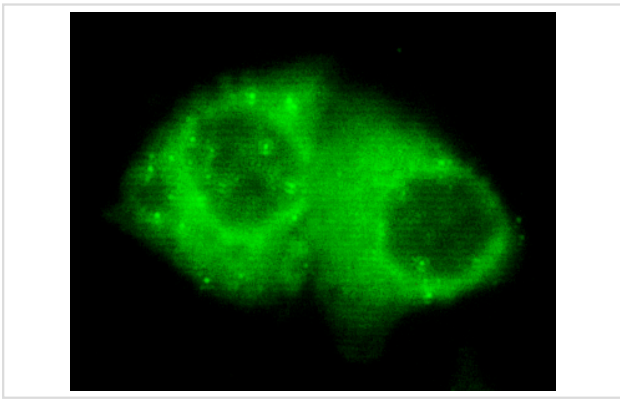
Predicted MW: 55kd

Western blotting: 1:1000

## Images



1:1000 dilution of this antibody detected KRT7 on 40ug of cell lysates



HeLa cells using anti- KRT7 (N-terminus) antibody diluted 1:150

---

Note: This product is for in vitro research use only and is not intended for use in humans or animals.