

Protein Phosphatase 4C Monoclonal Antibody

Catalog No: #27020

Package Size: #27020-1 50ul #27020-2 100ul

Orders: order@signalwayantibody.comSupport: tech@signalwayantibody.com

Description

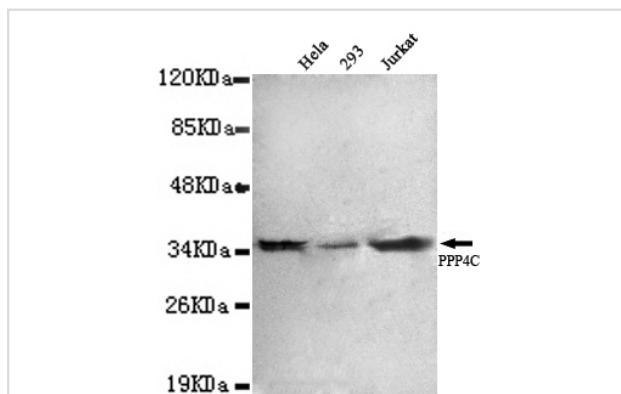
Product Name	Protein Phosphatase 4C Monoclonal Antibody
Host Species	Mouse
Clonality	Monoclonal
Isotype	IgG2a
Purification	Purified by antigen-affinity chromatography.
Applications	WB ICC IHC
Species Reactivity	Hu D Ms B Rt
Immunogen Type	Recombinant protein
Immunogen Description	Recombinant full length protein (307aa) of human PPP4C.
Target Name	Protein Phosphatase 4C
Other Names	serine/threonine-protein phosphatase 4 catalytic subunit □PP-X □protein phosphatase X, catalytic subunit □protein phosphatase 4 (formerly X), catalytic subunit
Accession No.	UniProt:P60510 NCBI Gene ID:5531
Formulation	Purified mouse monoclonal in buffer containing 0.1M Tris-Glycine (pH 7.4, 150 mM NaCl) with 0.2% sodium azide, 50% glycerol
Storage	store at -20°C

Application Details

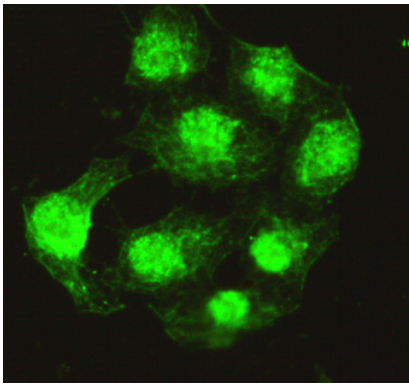
Predicted MW: 34kd

Western blotting: 1:1000

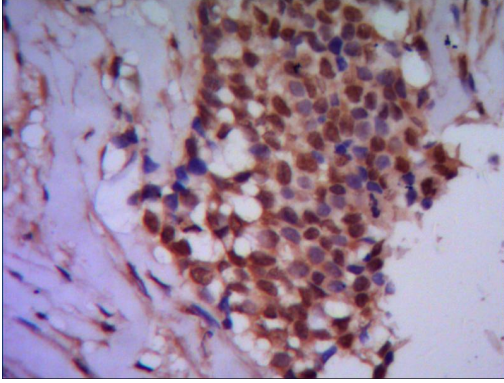
Images



1:2000 dilution of this antibody detected PPP4C on 40ug of cell lysates



HeLa cells using anti- PPP4C antibody diluted 1:200



Paraffin-embedded human breast cancer using anti- PPP4C diluted 1:50-1:100

Note: This product is for in vitro research use only and is not intended for use in humans or animals.