

## CASK Antibody

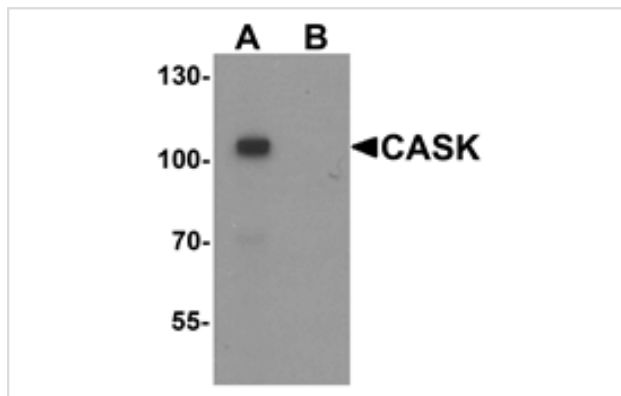
Catalog No: #25508

Orders: [order@signalwayantibody.com](mailto:order@signalwayantibody.com)Support: [tech@signalwayantibody.com](mailto:tech@signalwayantibody.com)

## Description

Product Name	CASK Antibody
Host Species	Rabbit
Clonality	Polyclonal
Purification	Affinity chromatography purified via peptide column
Applications	E WB
Species Reactivity	Hu Ms Rt
Specificity	At least six alternatively spliced transcript variants have been observed.
Immunogen Type	Peptide
Immunogen Description	16 amino acid peptide near the amino terminus of human CASK.
Target Name	CASK
Other Names	Calcium/calmodulin-dependent serine protein kinase (MAGUK family), CAGH39, CAMGUK, CMG, FGS4, LIN2, MICPCH
Accession No.	NP_003679
Formulation	PBS containing 0.02% sodium azide.
Storage	Store at 4°C for three months and -20°C, stable for up to one year.

## Images



Western blot analysis of CASK in mouse brain tissue lysate with CASK antibody at 1 ug/ml in (A) the absence and (B) the presence of blocking peptide.

Note: This product is for in vitro research use only and is not intended for use in humans or animals.