

## DELE Antibody

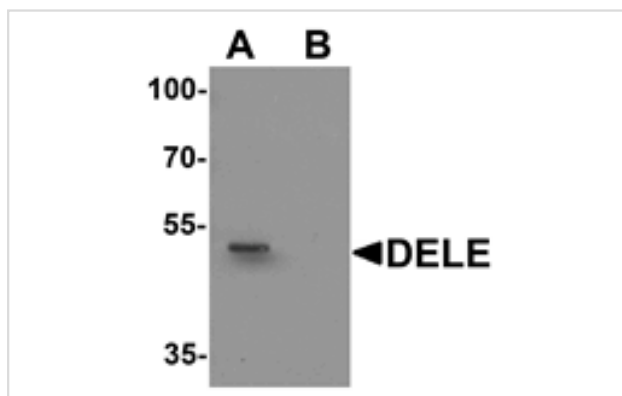
Catalog No: #25507

Orders: [order@signalwayantibody.com](mailto:order@signalwayantibody.com)Support: [tech@signalwayantibody.com](mailto:tech@signalwayantibody.com)

## Description

Product Name	DELE Antibody
Host Species	Rabbit
Clonality	Polyclonal
Purification	Affinity chromatography purified via peptide column
Applications	E WB
Species Reactivity	Hu Rt
Immunogen Type	Peptide
Immunogen Description	DELE antibody was raised against an 18 amino acid peptide near the amino terminus of human DELE.
Target Name	DELE
Other Names	Death ligand signal enhancer, KIAA0141
Accession No.	NP_055588
Formulation	PBS containing 0.02% sodium azide.
Storage	Store at 4°C for three months and -20°C, stable for up to one year.

## Images



Western blot analysis of DELE in rat brain tissue lysate with DELE antibody at 1 ug/ml in (A) the absence and (B) the presence of blocking peptide.

Note: This product is for in vitro research use only and is not intended for use in humans or animals.