

TRAP Antibody

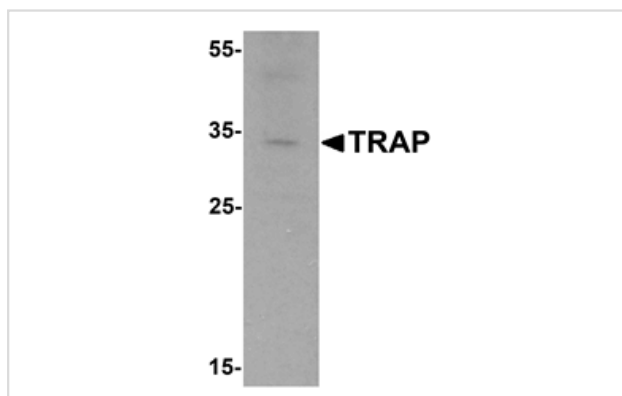
Catalog No: #25505

Orders: order@signalwayantibody.comSupport: tech@signalwayantibody.com

Description

Product Name	TRAP Antibody
Host Species	Rabbit
Clonality	Polyclonal
Purification	Affinity chromatography purified via peptide column
Applications	E WB
Species Reactivity	Hu Ms
Immunogen Type	Peptide
Immunogen Description	TRAP antibody was raised against an 18 amino acid peptide near the carboxy terminus of human TRAP.
Target Name	TRAP
Other Names	Tartrate resistant acid phosphatase 5, ACP5, uteroferrin, SPENCD1
Accession No.	NP_001104505
Formulation	PBS containing 0.02% sodium azide.
Storage	Store at 4°C for three months and -20°C, stable for up to one year.

Images



Western blot analysis of TRAP in mouse brain tissue lysate with TRAP antibody at 1 ug/ml.

Note: This product is for in vitro research use only and is not intended for use in humans or animals.