

ESRRB Antibody

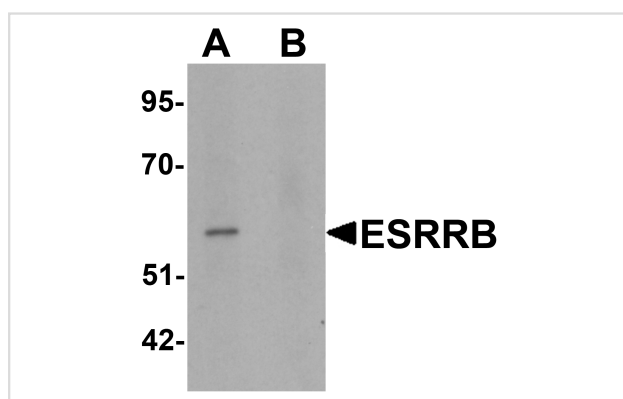
Catalog No: #25479

Orders: order@signalwayantibody.comSupport: tech@signalwayantibody.com

Description

Product Name	ESRRB Antibody
Host Species	Rabbit
Clonality	Polyclonal
Purification	Affinity chromatography purified via peptide column
Applications	E WB
Species Reactivity	Hu
Immunogen Type	Peptide
Immunogen Description	19 amino acid peptide near the carboxy terminus of human ESRRB.
Target Name	ESRRB
Other Names	Estrogen-related receptor beta, ERR2, ERRb, ESRL2, NR3B2, DFNB35
Accession No.	NP_004443
Formulation	PBS containing 0.02% sodium azide.
Storage	Store at 4°C for three months and -20°C, stable for up to one year.

Images



Western blot analysis of ESRRB in human heart tissue lysate with ESRRB antibody at 1 ug/mL in (A) the absence and (B) the presence of blocking peptide.

Note: This product is for in vitro research use only and is not intended for use in humans or animals.