

## HHATL Antibody

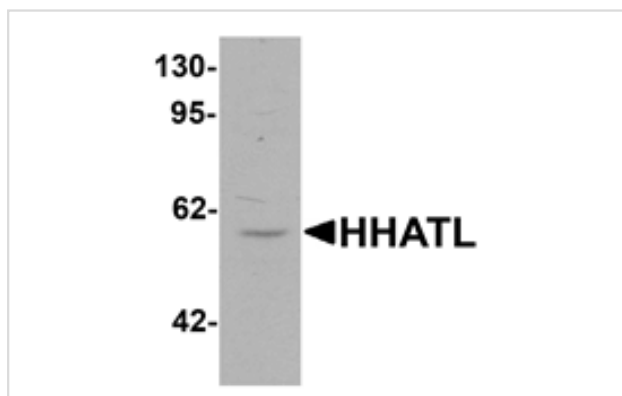
Catalog No: #25470

Orders: [order@signalwayantibody.com](mailto:order@signalwayantibody.com)Support: [tech@signalwayantibody.com](mailto:tech@signalwayantibody.com)

## Description

Product Name	HHATL Antibody
Host Species	Rabbit
Clonality	Polyclonal
Purification	Affinity chromatography purified via peptide column
Applications	E WB
Species Reactivity	Hu Ms Rt
Immunogen Type	Peptide
Immunogen Description	19 amino acid peptide near the amino terminus of human HHATL.
Target Name	HHATL
Other Names	Protein-cysteine N-palmitoyltransferase HHAT-like protein, GUP1, OACT3, MSTP002, MBOAT3, C3orf3
Accession No.	NP_065758
Formulation	PBS containing 0.02% sodium azide.
Storage	Store at 4°C for three months and -20°C, stable for up to one year.

## Images



Western blot analysis of HHATL in 3T3 cell lysate with HHATL antibody at 1 ug/mL.

Note: This product is for in vitro research use only and is not intended for use in humans or animals.