

EMX1 Antibody

Catalog No: #25398

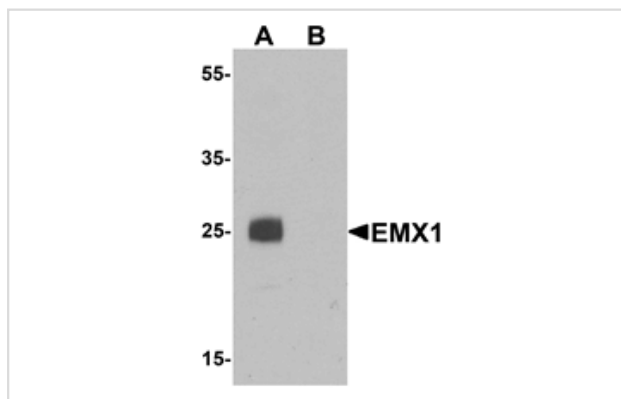
Orders: order@signalwayantibody.com

Support: tech@signalwayantibody.com

Description

Product Name	EMX1 Antibody
Host Species	Rabbit
Clonality	Polyclonal
Purification	Affinity chromatography purified via peptide column
Applications	E WB
Species Reactivity	Hu Ms Rt
Specificity	At least two isoforms of EMX1 are known to exist; this antibody will detect the longer isoform. EMX1 antibody is predicted to not cross-react with other EMX family members.
Immunogen Type	Peptide
Immunogen Description	Raised against a 16 amino acid peptide near the amino terminus of human EMX1.
Target Name	EMX1
Other Names	Empty spiracles homolog 1, EMX-1, Empty spiracles-like protein
Accession No.	NP_004088
Formulation	Supplied in PBS containing 0.02% sodium azide.
Storage	Can be stored at -20°C, stable for one year. As with all antibodies care should be taken to avoid repeated freeze thaw cycles. Antibodies should not be exposed to prolonged high temperatures.

Images



Western blot analysis of EMX1 in rat liver tissue lysate with EMX1 antibody at 1 ug/mL in (A) the absence and (B) the presence of blocking peptide.

Background

EMX1 is a homeobox transcription factor involved in specifying cell fates in the developing central nervous system and it participates in the development of olfactory neurons. EMX1 is specifically expressed in the developing telencephalic cortex expression, where expression is restricted to pyramidal neurons. EMX1 is a reliable marker of pyramidal neurons and pyramidal cell lineage. EMX1 has been shown to be one of the downstream target genes for Gli-Kruppel family member 3 (Gli3) transcription factor, which is a part of the Sonic hedgehog-Patched-Gli signaling pathway important in endocrine signaling.

Note: This product is for in vitro research use only and is not intended for use in humans or animals.