

SPATA19 Antibody

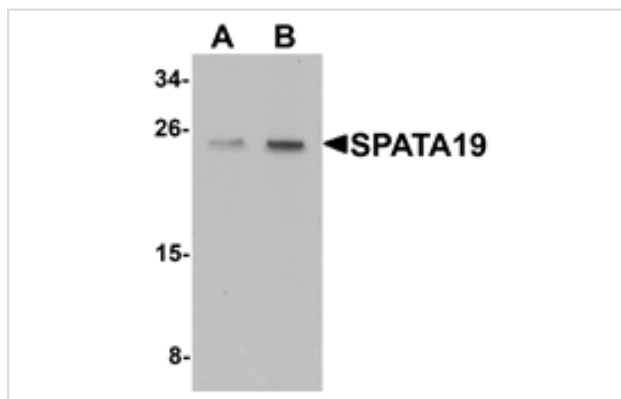
Catalog No: #25396

Orders: order@signalwayantibody.comSupport: tech@signalwayantibody.com

Description

Product Name	SPATA19 Antibody
Host Species	Rabbit
Clonality	Polyclonal
Purification	Affinity chromatography purified via peptide column
Applications	E WB
Species Reactivity	Hu Ms Rt
Specificity	At least two isoforms of SPATA19 are known to exist; this antibody will detect both isoforms. SPATA19 antibody is predicted to not cross-react with other SPATA family members.
Immunogen Type	Peptide
Immunogen Description	Raised against an 17 amino acid peptide near the amino terminus of human SPATA19.
Target Name	SPATA19
Other Names	Spermatogenesis associated protein 19, CT132, SPAS1, SPERGEN1
Accession No.	EAW67810
Formulation	Supplied in PBS containing 0.02% sodium azide.
Storage	Can be stored at -20°C, stable for one year. As with all antibodies care should be taken to avoid repeated freeze thaw cycles. Antibodies should not be exposed to prolonged high temperatures.

Images



Western blot analysis of SPATA19 in rat lung tissue lysate with SPATA19 antibody at (A) 1 and (B) 2 ug/mL.

Background

SPATA19, also known as SPERGEN1, was initially identified as a testis-specific protein that localizes to the surface of mitochondria in the middle piece of mature spermatozoa. Recent experiments have shown that elevated levels of SPATA19 have been found in basal cell carcinomas and prostate cancers, suggesting that SPATA19 may serve as a putative cancer biomarker and a target for cancer immunotherapy.

Note: This product is for in vitro research use only and is not intended for use in humans or animals.