

SPATA18 Antibody

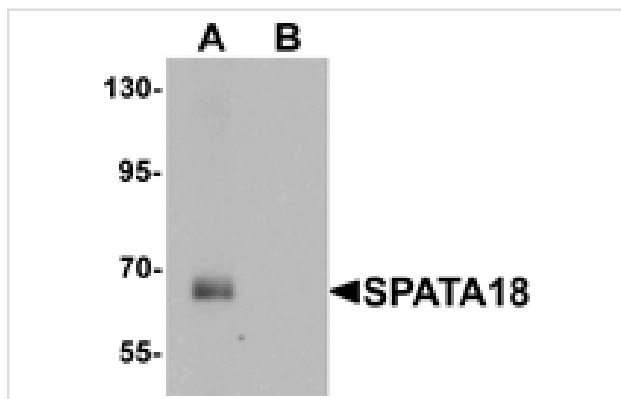
Catalog No: #25395

Orders: order@signalwayantibody.comSupport: tech@signalwayantibody.com

Description

Product Name	SPATA18 Antibody
Host Species	Rabbit
Clonality	Polyclonal
Purification	Affinity chromatography purified via peptide column
Applications	E WB
Species Reactivity	Hu Ms Rt
Specificity	At least three isoforms of SPATA18 are known to exist; this antibody will detect the two longest isoforms. SPATA18 antibody is predicted to not cross-react with other SPATA family members.
Immunogen Type	Peptide
Immunogen Description	Raised against a 19 amino acid peptide near the amino terminus of human SPATA18.
Target Name	SPATA18
Other Names	Spermatogenesis associated protein 18, MIEAP, SPETEX1
Accession No.	NP_660306
Formulation	Supplied in PBS containing 0.02% sodium azide.
Storage	Can be stored at -20°C, stable for one year. As with all antibodies care should be taken to avoid repeated freeze thaw cycles. Antibodies should not be exposed to prolonged high temperatures.

Images



Western blot analysis of SPATA18 in rat lung tissue lysate with SPATA18 antibody at 1 ug/mL in (A) the absence and (B) the presence of blocking peptide

Background

SPATA18, also known as SPETEX-1, was initially identified as a cytoplasmic protein of elongate spermatids that is thought to be involved in differentiation process of elongate spermatids to mature spermatozoa. Recent experiments have shown that SPATA18 is a transcriptional target of p53 and p63. It has also been suggested to play a role in mitochondria quality control by inducing intramitochondrial lysosome-like organelle that eliminate oxidized mitochondrial proteins.

Note: This product is for in vitro research use only and is not intended for use in humans or animals.