

ZGPAT Antibody

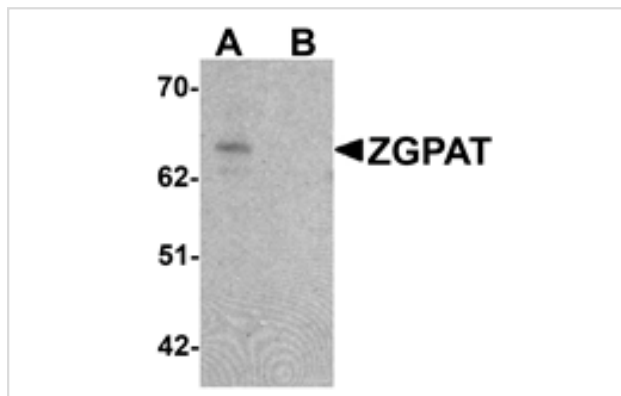
Catalog No: #25393

Orders: order@signalwayantibody.comSupport: tech@signalwayantibody.com

Description

Product Name	ZGPAT Antibody
Host Species	Rabbit
Clonality	Polyclonal
Purification	Affinity chromatography purified via peptide column
Applications	E WB
Species Reactivity	Hu
Specificity	Multiple isoforms of ZGPAT are known to exist.
Immunogen Type	Peptide
Immunogen Description	Raised against a 15 amino acid peptide near the carboxy terminus of human ZGPAT.
Target Name	ZGPAT
Other Names	Zinc finger CCCH-type with G patch domain-containing protein, ZIP, ZC3H9, ZC3HDC9, GPATC6, GPATCH6
Accession No.	NP_115916
Formulation	Supplied in PBS containing 0.02% sodium azide.
Storage	Can be stored at -20°C, stable for one year. As with all antibodies care should be taken to avoid repeated freeze thaw cycles. Antibodies should not be exposed to prolonged high temperatures.

Images



Western blot analysis of ZGPAT in SK-N-SH cell lysate with ZGPAT antibody at 1 ug/mL in (A) the absence and (B) the presence of blocking peptide.

Background

The Zinc finger CCCH-type with G patch domain-containing protein (ZGPAT), is a transcriptional repressor that regulates several cellular pathways including EGFR pathways that are involved in cell proliferation, migration and survival. ZGPAT recruits the Mi-2/NuRD complex and represses the expression of EGFR. ZGPAT is down-regulated in breast carcinomas and its expression is negatively correlated with that of EGFR, suggesting that it may be a potential target for breast cancer therapy. Multiple isoforms of ZGPAT are known to exist, including sZIP, which binds to the Mi-2/NuRD complex but lacks the DNA binding component of full-length ZGPAT, thereby antagonizing transcription repression and growth inhibition by ZGPAT.

Note: This product is for in vitro research use only and is not intended for use in humans or animals.