

## ANKLE2 Antibody

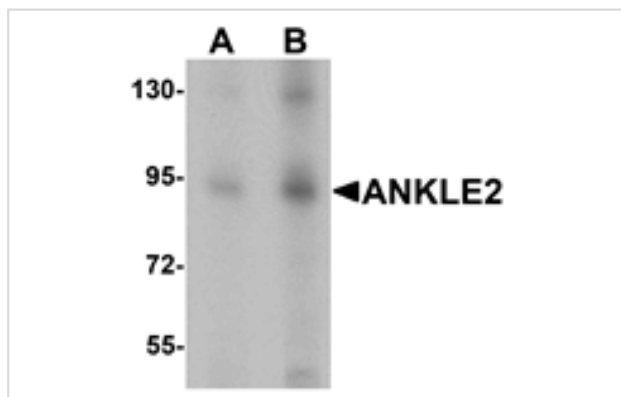
Catalog No: #25392

Orders: [order@signalwayantibody.com](mailto:order@signalwayantibody.com)Support: [tech@signalwayantibody.com](mailto:tech@signalwayantibody.com)

## Description

Product Name	ANKLE2 Antibody
Host Species	Rabbit
Clonality	Polyclonal
Purification	Affinity chromatography purified via peptide column
Applications	E WB
Species Reactivity	Hu Ms Rt
Specificity	Three isoforms of ANKLE2 are known to exist; this antibody will detect all three. ANKLE2 antibody is predicted to not cross-react with ANKLE2.
Immunogen Type	Peptide
Immunogen Description	Raised against a 19 amino acid peptide near the center of human ANKLE2.
Target Name	ANKLE2
Other Names	Ankyrin repeat and LEM domain containing 2, LEMD7
Accession No.	AAH43157
Formulation	Supplied in PBS containing 0.02% sodium azide.
Storage	Can be stored at -20°C, stable for one year. As with all antibodies care should be taken to avoid repeated freeze thaw cycles. Antibodies should not be exposed to prolonged high temperatures.

## Images



Western blot analysis of ANKLE2 in SW480 cell lysate with ANKLE2 antibody at (A) 1 and (B) 2 ug/mL.

## Background

Ankyrins are membrane adaptor molecules that play important roles in coupling integral membrane proteins to the spectrin-based cytoskeleton network. ANKLE2 (Ankyrin repeat and LEM domain containing 2) is a member of ankyrin repeat and LEM domain containing family. It is a potential single-pass membrane protein that contains three ankyrin repeats and a Lem domain. Ankyrin repeats mediate protein-protein interactions and are among the most common structural motifs in known proteins. The function of this protein is still under investigation.

Note: This product is for in vitro research use only and is not intended for use in humans or animals.