

ANKLE1 Antibody

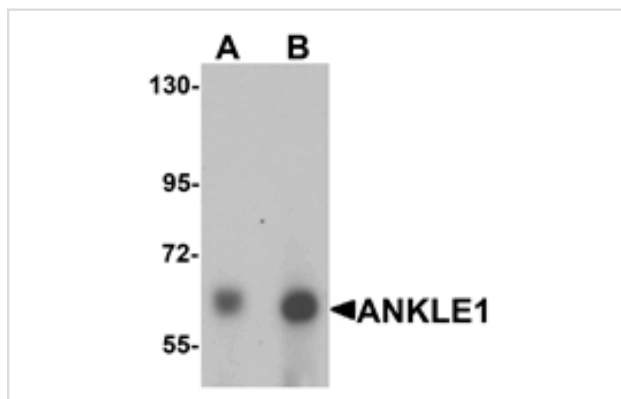
Catalog No: #25391

Orders: order@signalwayantibody.comSupport: tech@signalwayantibody.com

Description

Product Name	ANKLE1 Antibody
Host Species	Rabbit
Clonality	Polyclonal
Purification	Affinity chromatography purified via peptide column
Applications	E WB
Species Reactivity	Hu Ms Rt
Specificity	Two isoforms of ANKLE1 are known to exist. ANKLE1 antibody is predicted to not cross-react with ANKLE2
Immunogen Type	Peptide
Immunogen Description	Raised against a 15 amino acid peptide near the carboxy terminus of human ANKLE1.
Target Name	ANKLE1
Other Names	Ankyrin repeat and LEM domain containing 1, ANKRD41, Ankyrin repeat domain-containing protein 41, LEM3, LEMD6, LEM-domain containing protein 3
Accession No.	NP_689576
Formulation	Supplied in PBS containing 0.02% sodium azide.
Storage	Can be stored at -20°C, stable for one year. As with all antibodies care should be taken to avoid repeated freeze thaw cycles. Antibodies should not be exposed to prolonged high temperatures.

Images



Western blot analysis of ANKLE1 in 293 cell lysate with ANKLE1 antibody at (A) 1 and (B) 2 ug/mL.

Background

Ankyrins are membrane adaptor molecules that play important roles in coupling integral membrane proteins to the spectrin-based cytoskeleton network. ANKLE1 (Ankyrin repeat and LEM domain containing 1) is a member of ankyrin repeat and LEM domain containing family. It is a potential single-pass membrane protein that contains ankyrin repeats and a Lem domain. Ankyrin repeats mediate protein-protein interactions and are among the most common structural motifs in known proteins. While the function of this protein is still under investigation, its gene locus has been associated with susceptibility to ovarian and breast cancer.

Note: This product is for in vitro research use only and is not intended for use in humans or animals.